



On-line PICASSO PROJECT

**Comprehensive Catalogue Raisonné
Prof. Dr. Enrique Mallen**

1902



Tête de femme (Étude). Paris. [Early]/1902. Black crayon heightened with white chalk on paper. [31,8] 31,5 x 24,5 cm. Sotheby's. #134, L14004, 02/06/14. Formerly Marina Picasso Collection. (Inv 00346).

OPP.02:271; PP.02:197; Z.XXI:350; JG.84*:171; JR.93*:6; MP.81*:21; MU.07a*:173; PA.02e*:154; VE.81*:35; VI.05*:122

Bateliers nus. Barcelona. [Early]/1902. Wax crayon on business card [OIC]. 13 x 8,9 cm. Private collection. Formerly Sebastià Junyer-Vidal Collection, Barcelona.

OPP.02:397; PP.02:023; Z.I:141





Deux femmes dans le parc. Paris. Pre-25-July/1902. Ink
[Reproduced in Gil Blas, 07/25/02]. S/U. Private collection.

OPP.02:293; MG.15:168p; MM.97:36p

Paysage avec lac. Barcelona. [1st-Three-Quarters]/1902. Oil on canvas [Reverse of *Les toits de Barcelone au clair de lune*].
57,8 x 60,3 cm. Museu Picasso, Barcelona. Donation 1970.

OPP.02:220; MPB:110.020r; PP.03:127;
PB.81*:7A.22R; TO.94*:165r





Publicité pour 'Lecitina Agell'. Barcelona. [January~Late-October]/1902. Printed card. 9 x 14 cm. Fundació Palau, Caldes d'Estrac. (Inv 12221).

OPP.02:006; P.I:727; PP.02:118; JP.66:70; JR.91:248p

Deux nus et un chat. Barcelona. [January~Late-October]/1902 [~1903]. Graphite pencil, color pencil & watercolor on paper. 18 x 26,5 cm. Museu Picasso, Barcelona. Legado Garriga Roig, 1953.

OPP.02:024; MPB:50.492; PP.0203:060; DW.05:24p; EV.15:193p; IS.98:30p; JC.01a*:28; JR.91:10p; MA.03a*:n/a; NM.06:61p; NM.95:73p; PA.07a*:90p; PA.19h*:104; PD.09:49p; TK.02*:n/a; TO.97*:214; WR.80*:51p; WW.91:91p





L'entrevue (Les deux sœurs) (Étude). Barcelona.
[January~Late-October]/1902. Pencil on paper. 62,2 x 45,7 cm.
Christie's. #1076, 12146, 11/17/16. Formerly Christie's. #254,
11790, 02/03/16.

OPP.02:028; PP.02:040; BO.00*:5; DC.91:45p; MM.97*:78;
MR.21:2.13; MU.13b*:96; NY.87a*:3

L'entrevue. Barcelona. [January~Late-October]/1902.
Charcoal, pastel & watercolor on paper. [22,4 x 13,5] 22,9 x 14
cm. Christie's. #1018, 12070, 05/13/16.

OPP.02:032; PP.02:067; DC.91:45p





Amour chassant un oiseau. Barcelona [Paris]. [January~Late-October/1902]. Pen, colored inks & watercolor on paper. 20,8 x 26,9 cm. Museu Picasso, Barcelona. Donation 1970.

OPP.02:036; C:937; MPB:110.514; PP.02:145; TK.02*:n/a; TO.97*:192

L'entrevue (Les deux sœurs): femme auprès d'un personnage (Étude). Barcelona. [January~Late-October]/1902. Pen, ink & aquatint on graph paper. 33,5 x 22,8 cm. Museu Picasso, Barcelona. Donation 1970.

OPP.02:037; C:267; MPB:110.540; PP.02:039; BF.21*:196p; DK.99:301p; JG.13*:11; JG.84*:156; MA.23b*:n/a; MM.97:301p; PD.06*:n/a; PJ.02*:124; TK.02*:n/a; TL.89*:10; TO.97*:194; VC.10*:n/a; VC.89*:n/a; WR.80*:50p





Études pour La supoe. Barcelona.
[January~Late-October]/1902. Pen & sepia ink on
paper. 32,5 x 45 cm. Museu Picasso, Barcelona.
Donation 1970.

OPP.02:038; C:228; MPB:110.550; P.I:845;
PP.02:217; BF.21*:221p; NM.06:55p; TK.00*:n/a;
TK.02*:n/a; TO.97*:195

Maternité sur le quai. Barcelona.
[1901~] [January~Late-October]/1902
[~1903]. Pen & ink on paper. 15,1 x 23
cm. Museu Picasso, Barcelona. Donation
1970.

OPP.02:043; C:259; MPB:110.492;
PP.0203:097; JG.84*:184; PA.01b*:n/a;
PB.81*:8A.11; TO.94*:162; TO.97*:200





Femme de dos. Barcelona. [January~Late-October]/1902. Pen & black ink on brown paper. 41,3 x 15,5 cm. Museu Picasso, Barcelona. Donation 1970.

OPP.02:048; C:931; MPB:110.548r; PP.02:136; TK.02*:n/a; TO.97*:207a

Dessins et caricatures. Barcelona. [January~Late-October]/1902. Pen, brush, sepia & black ink on brown paper. 15,5 x 41,3 cm. Museu Picasso, Barcelona. Donation 1970.

OPP.02:049; MPB:110.548; PP.02:137; BA.03a*:47; TO.97*:207b





Personnage, tête et guitare. Barcelona [Paris]. [January ~ Late-October]/1902 [~1903]. Pen, sepia ink & pencil on paper [Obverse of *Étude de tête*]. 31,5 x 22,1 cm. Museu Picasso, Barcelona. Donation 1970.

OPP.02:050; C:954; MPB:110.525; PP.0203:092; MF.01:69p; PA.20j*:22; PP.19:113p; TK.02*:n/a; TO.97*:209; WR.12b:148

Femme nue. Barcelona [Paris]. [January~Late-October]/1902 [~1903]. Pen & sepia ink collage on paper attached to electric-blue varnished paper. 19,3 x 33,8 cm. Museu Picasso, Barcelona. Donation 1970.

OPP.02:054; C:967; MPB:110.533; P.II:675; PP.0203:064; BA.12c*:n/a; GI.95*:n/a; JC.01a:91p; JG.13:33p; JG.84*:158; NM.06:60p; PA.07a*:102; PA.19h*:105; PJ.02*:131; TK.02*:n/a; TO.97*:215





Le peintre Joan Ossó. Barcelona. [January~Late-October]/1902 [~1903]. Pen, sepia ink & watercolor on yellowish paper. 16,4 x 12 cm. Museu Picasso, Barcelona. Ceded by Barcelona City Council, 1963. Legado Garriga Roig, 1953.

OPP.02:055; MPB:50.495; PP.0203:058; BA.03a*:51; BA.18*:70p; BM.05:57p; JC.01a*:31; TK.02*:n/a; TO.97*:216

Figure féminine. Barcelona. [January~Late-October]/1902 [~1903]. Pen, sepia ink & watercolor on white paper. 19,8 x 13 cm. Museu Picasso, Barcelona. Legado Garriga Roig, 1953.

OPP.02:056; MPB:50.491; PP.0203:059; JC.01a*:27; JG.84*:176; JR.91:239p; NM.95:78p; PA.19h*:108; PD.09:29p; TO.97*:217; UP.00:111





Nu allongé, regardant de face. Barcelona [Paris]. [January~Late-October]/1902 [~1903]. Pen & sepia wash on white paper. 23,1 x 33,8 cm. Museu Picasso, Barcelona.

OPP.02:057; C:216; MPB:110.534; PP.0203:053; JC.01a*:35; JG.84*:179; JR.91:202p; MA.03a*:n/a; NS.01:72; ST.88*:n/a; TK.02*:n/a; TO.97*:218

Isidre Nonell avec une femme. Barcelona. [January~Late-October]/1902 [~1903]. Pen, sepia ink & watercolor on yellowish paper. 24,8 x 16 cm. Museu Picasso, Barcelona. Legado Garriga Roig, 1953.

OPP.02:058; MPB:50.493; PP.0203:062; AC.09:101p; BA.03a*:52; BA.99d*:n/a; DW.05:18p; EV.15:197p; JC.01a*:29; JG.84*:178; MA.03a*:n/a; NM.95:42p; OS.09b*:n/a; PA.19h*:102; TK.02*:n/a; TO.95a*:166; TO.97*:219; WR.80*:51p





Nu couché avec Picasso assis à ses pieds (Autoportrait). [Paris] Barcelona. [January~Late-October]/1902 [~1903]. Sepia ink, pen & watercolor on paper. 17,6 x 23,2 cm. Museu Picasso, Barcelona. Legado Garriga Roig, 1953.

OPP.02:059; DB.DIV:5; MPB:50.489; PP.0203:051; Z.XXI:283; BA.99d*:n/a; EV.15:195p; FR.91*:n/a; JC.01a*:26; JG.84*:116; JR.91:265p; MM.97*:90; PA.07a*:91p; PA.19h*:107; PB.21:62; PB.81*:7A.21; PB.81*:7A.21; SG.96:2.9; ST.88*:n/a; TK.02*:n/a; TO.95a*:165; TO.97*:220; UP.00:109; UW.84:130p; WR.96:348p; WW.91:90p; YP.13*:34

Ángel Fernández de Soto avec une femme nue.

Barcelona. [January~Late-October]/1902 [~1903]. Pen, sepia ink, wash, watercolor & Conté crayon on white paper. 21 x 15,2 cm. Museu Picasso, Barcelona. Given by the Barcelona City Council, 1963. Legado Garriga Roig, 1953.

OPP.02:061; MPB:50.494; PP.0203:055; BA.03a*:50; DW.05:18p; EC.16*:49; JC.01a*:30; JG.84*:175; JR.91:291p; MA.03a*:n/a; NM.95:89p; PA.19h*:109; PD.09:48p; TK.02*:n/a; TO.95a*:168; TO.97*:222; WR.80*:32p; WW.91:90p





Christ en croix. Barcelona. [January~Late-October]/1902 [1903]. Graphite pencil [Reverse of *La mort du torero*]. 37,2 x 26,8 cm. Musée Picasso, Paris. Dation 1979.

OPP.02:069; MPP:451.v; P.I:877; PP.02:111; Z.VI:390; BF.21*:228p; BL.91*:9; JP.66:85; NM.95:49p; PA.79a*:386; RK.01*:n/a; UW.84:45e

La mort du torero. Barcelona. [January~Late-October]/1902 [1904]. [Conté crayon] Black chalk [Obverse of *Christ en croix*]. 37,2 x 26,8 cm. Musée Picasso, Paris. Dation 1979.

OPP.02:070; MPP:451.r; PP.02:112; Z.VI:611; BL.91*:9; PA.79a*:386; UW.84:50a





Femme assise et étreintes. Paris [Barcelona]. [January~Late-October]/1902. India ink on paper. 31,5 x 20 cm. Private collection, Germany.

OPP.02:072; PP.02:068; Z.XXI:333; MD.02*:48p; RD.00*:21

Ángel Fernández de Soto et son amie. Barcelona [Paris]. [January~Late-October]/1902. Pastel & black crayon on board. 47 x 30,5 cm. Sotheby's. #39, L07002, 02/05/07. Formerly Michael Haas Gallery, Berlin; Sotheby's. #36, 10/18/89.

OPP.02:074; PP.0203:080; Z.XXII:1; MD.02*:9p; PT.81*:n/a; RD.00*:13; TU.05*:119; VC.99*:15





Femme assise. Barcelona [Paris]. [January~Late-October]/1902 [1906]. Pen & ink on paper. [41,3 x 30] 20 x 14 cm. Sotheby's. #9, L17007, 06/21/17. Formerly Mrs. Richard K. Weil Collection, St. Louis; Gertrude Stein Collection.

OPP.02:075; P.I:729; PP.02:049; Z.VI:1463; AP.89:30p; BS.55:127p; BS.86a*:61; BS.86b*:45; EB.70:55p; GD.77:8p; RD.00*:58; ZU.88*:6

Femme de profil. Barcelona. [January~Late-October]/1902 [~1903]. Pen & ink on paper. 13,4 x 10,4 cm. Sotheby's. #192, N08197, 05/04/06.

OPP.02:077; PP.0203:022; Z.VI:473





L'entrevue (Les deux sœurs) (Étude). Barcelona.
[January~Late-October]/1902. Graphite pencil on paper. 16 x 11
cm. Private collection, Furtwangen.

OPP.02:079; DB.DVII:6; LD:39B; P.I:736; PP.02:041; Z.VI:435;
BP.62:109; JG.84*:152; KR.11*:70p; MD.02*:47p; RD.00*:25;
RD.9*6:58

Mère et enfant. Barcelona [Paris]. [January~Late-
October]/1902. Graphite pencil on paper. 17 x 12 cm. Private
collection, Germany.

OPP.02:080; PP.02:161; HS.94*:11; KR.11*:71p;
MD.02*:46p; RD.00*:22





Huile sur toile *Pierreuses au bar accrochée au mur de l'atelier au 10 carrer Nou de la Rambla à Barcelone*. Barcelona. [January~Late-October]/1902. Gelatin silver print. 13,1 x 11,8 cm. Musée Picasso, Paris. (Inv APPH2813).

OPP.02:295; PA.19h*:83; PA.21e*:29

Femme au verre. Barcelona. [Post-18-January]/1902. Composite image of principal component analysis of infrared hyperspectral imaging and X-ray radiograph of oil on canvas [Underlayer of *Mère et enfant au bord de la mer (À Dr. Josep Fontbona)*]. 81,7 x 59,8 cm. Pola Museum of Art, Hakone, Kanagawa, Japan.

OPP.02:310





Femme au verre. Barcelona. [Post-18-January]/1902. Composite image of principal component analysis of infrared hyperspectral imaging and X-ray radiograph of oil on canvas [Underlayer of *Mère et enfant au bord de la mer (À Dr. Josep Fontbona)*]. 81,7 x 59,8 cm. Pola Museum of Art, Hakone, Kanagawa, Japan.

OPP.02:311

Femme au verre. Barcelona. [Post-18-January]/1902. X-ray radiograph of oil on canvas [Underlayer of *Mère et enfant au bord de la mer (À Dr. Josep Fontbona)*]. 81,7 x 59,8 cm. Pola Museum of Art, Hakone, Kanagawa, Japan.

OPP.02:386





Femme au verre. Barcelona. [Post-18-January]/1902. Composite image of principal component analysis of infrared hyperspectral imaging and X-ray radiograph of oil on canvas [Underlayer of *Mère et enfant au bord de la mer (À Dr. Josep Fontbona)*]. 81,7 x 59,8 cm. Pola Museum of Art, Hakone, Kanagawa, Japan.

OPP.02:387

Les toits de Barcelone au clair de lune. Barcelona. [Late-January]/1902. Oil on canvas [Obverse of *Paysage avec lac*]. 57,8 x 60,3 cm. Museu Picasso, Barcelona. Donation 1970.

OPP.02:007; C:221; LD:323;
MPB:110.020; P.I:901; PP.03:126;
AM.07*:n/a; BA.24a*:6p; BA.87a*:n/a;
BA.90c*:n/a; BF.21*:159p; CR.07:101p;
CR.14:13; CR.98:57p; EV.10*:290p;
EV.15:147p; JG.13:20p; LE.88a*:n/a;
LO.85*:n/a; LU.86*:n/a; MA.81b*:33;
PA.19h*:116; PB.81*:7A.22; PJ.02*:123;
TK.02*:n/a; TO.94*:165





Groupe d'hommes. Paris. [Late-January]/1902. Pen & India ink over pencil on paper. [28 x 19,5] [27 x 17] 28,1 x 19,7 cm. Musée Picasso, Paris. Dation 1979.

OPP.02:173; MPP:459; P.I:860; PP.02:178; Z.XXI:400; BJ.19*:n/a; BL.91*:52; CS.00:99p; JG.84*:183; PA.19h*:112; PA.79a*:384; RK.01*:n/a; SY.11*:n/a

La miséreuse accroupie et paysage (Parc del Laberint d'Horta). Barcelona. [Pre-Spring]/1902. X-radiograph of oil on canvas [Underlayer of *La miséreuse accroupie*]. 101,3 x 66 cm. Art Gallery of Ontario, Toronto. (Inv 83.316). Gift of Margaret Dunlap Crang, 1983.

OPP.02:304; BF.21*:160p; BF.21:70p





Femme nue de dos les jambes croisées. Barcelona. [1st-Three-Quarters]/1902. Pen & color pencil [OiC]. 9 x 14 cm. Private collection. Formerly Sebastià Junyer-Vidal Collection, Barcelona.

OPP.02:201; PP.02:032; Z.I:157; AC.46:144

Femme assise se coiffant. Barcelona. [1st-Three-Quarters]/1902. Pen & color pencil [OiC]. 9 x 14 cm. Private collection. Formerly Sebastià Junyer-Vidal Collection, Barcelona.

OPP.02:202; PP.02:034; Z.I:159; AC.46:145





Femme nue de dos la jambe droite levée. Barcelona. [1st-Three-Quarters]/1902. Pen, ink, watercolor & colored wax crayons on card. [14 x 9] 13,2 x 8,9 cm. Mark Borghi Fine Art Inc. 2009. Formerly Sebastià Junyer-Vidal Collection, Barcelona.

OPP.02:203; PP.02:031; Z.I:156; AC.46:147

Femme au châle bleu. Barcelona. [1st-Three-Quarters]/1902. Watercolor & India ink on paper. 15,5 x 10,5 cm. Marina Picasso Collection. (Inv 423). Courtesy Galerie Jan Krugier, Geneva.

OPP.02:204; LD:317; PP.0102:005; Z.XXI:342; GS.85*:6





Buste de femme aux bras croisés. Barcelona. [1st-Three-Quarters]/1902. Pen on paper. 15,9 x 11,1 cm. Museu Picasso, Barcelona. Donation 1970.

OPP.02:205; C:913; MPB:110.451; PP.02:054; JG.84*:150; LO.98a*:n/a; ST.88*:n/a

Deux études de têtes. [Barcelona] Paris. [1st-Three-Quarters]/1902. Conté pencil on paper. 16,7 x 22,2 cm. Museu Picasso, Barcelona. Donation 1970.

OPP.02:214; C:930; MPB:110.489; PP.02:125





Dans un cabaret. Barcelona. [Late-January~Late-October]/1902. Pastel on cardboard. 31 x 40 cm. Nationalgalerie, Museum Berggruen, Staatlichen Museen zu Berlin. (Inv MB 2.2000). Formerly Mr. & Mrs. Lee A. Ault Collection, NY.

OPP.02:013; DB.VII:12; LD:42; P.I:756;
PP.02:010; Z.XXI:345; BL.06*:68p; BR.96*:8;
CE.90:4; CK.10:100; FW.67*:143; GE.88a*:63;
GM.11*:12; JR.62*:1.12; JR.91:263p;
MA.17b:58p; MA.22b:33p; PA.02c*:18;
RD.00*:12; RK.94*:28; TU.86*:15

La femme avec la bordure. Barcelona. [Late-January~Late-October]/1902. Oil on canvas. 61,3 x 51,4 cm. The Baltimore Museum of Art. (Inv 50.268). The Cone Collection, formed by Dr. Claribel Cone & Miss Etta Cone, Baltimore, MD.

OPP.02:016; DB.VII:10; LD:32; P.I:760;
PP.02:006; Z.I:118; AP.89:31p; AP.97:38p;
BF.21*:167p; BR.85:106p; BT.30*:43; BT.41*:85p;
BT.54*:122p; CP.67:79; DC.91:34p; EB.70:10p;
MA.17b*:91; MR.21:3.15; NY.12a*:225;
NY.55g*:58p; PD.09:33p; SC.11*:225; UP.00:97





Barcelone, paysage d'été. Barcelona. [January~Late-October]/1902. Pen & ink & watercolor on paper. 25 x 32 cm. The Picasso Estate.

OPP.02:019; P.I:767; PP.02:051; Z.VI:296; TO.94:222p

Femme en bleu. Barcelona. [End-January]/1902. Oil on canvas. [65,4 x 49.5] 63,5 x 50 cm. C. B. Nathhorst Collection, Stockholm. Formerly Jacques Sarlie Collection, NY.

OPP.02:008; DB.VII:4; LD:24; P.I:731; PP.02:036; Z.I:160; AC.46:131; BF.21*:177p; JL.71:11p; JR.91:234p; MR.53:25p; NY.32b*:n/a; NY.32g*:n/a; NY.36a*:14; ON.66:8p; OR.90:37p; UP.00:93





Femme au fichu bleu. Barcelona. [End-January]/1902. Oil on canvas [Overlayer of *Femme assise*]. 60,3 x 52,4 cm. Aichi Prefectural Museum of Art, Japan. Formerly Marina Picasso Collection. (Inv 12050).

OPP.02:009; DB.VII:9; LD:33; P.I:733; PP.02:030; Z.I:155; BF.21*:166p; GP.32*:11; JF.94a:13; JL.66*:12; KZ.32*:17; MP.81*:17; PD.09:33p; TB.10*:5; UP.00:98; WR.80*:48p

Femme assise. Barcelona. [End-January]/1902. X-ray of oil on canvas [Underlayer of *Femme au fichu bleu*]. 60,3 x 52,4 cm. Aichi Prefectural Museum of Art, Japan. Formerly Marina Picasso Collection. (Inv 12050).

OPP.02:394





La maison bleue. Barcelona. [February]/1902. Oil on canvas. [51,7 x 41,5] 50,5 x 40,5 cm. Dobe Collection, Zurich. Formerly Sotheby's. #40, 10/22/80; Mr. André Meyer Collection, NY; Gertrude Stein Collection.

OPP.02:095; DB.VII:1; LD:45; P.I:721; PP.02:059; Z.XXI:280; EB.70:8p; FA.70*:28; GP.32*:9; JG.84*:148; JR.91:232p; KZ.32*:14; PA.02c*:17; PA.14*:66; PA.14a*:n/a; PA.37a*:30; TO.94:223p; WW.91:89p

Étude avec femme nue et tête.

Barcelona. [February]/1902. Pen & ink on paper. 11,4 x 15,6 cm. Sotheby's. #339, 03/26/86.

OPP.02:115; P.I:719; PP.02:048; Z.I:193





Femme assise aux bras croisés. Barcelona.
[February]/1902. Pen, ink & watercolor on paper [OIC]. S/U.
Private collection.

OPP.02:118; P.I:724; PP.02:005

Femme nue à la longue chevelure.
Barcelona. [February]/1902. Ink. S/U.
Private collection.

OPP.02:131; P.I:765; PP.02:015; Z.I:128





Croquis de figure féminine. Barcelona. [February]/1902. Pen & ink on paper [Reverse of *Femme de dos, au chignon*]. 16,7 x 11,1 cm. Museu Picasso, Barcelona. Donation 1970.

OPP.02:234; C:912; MPB:110.452r; PP.0102:017; PB.81*:8A.6R

Nu avec fleur et pomme. Barcelona. [February]/1902. Graphite pencil on paper. 38,2 x 26,5 cm. Private collection.

OPP.02:267; PP.02:056; Z.VI:443; WR.12b:106





Nu accroupi. Barcelona. [February]/1902. Ink on paper. 15,7 x 10,7 cm. The Court Gallery, Somerset. 2013.

OPP.02:268; PP.02:057; Z.VI:459

Couple. Barcelona. [February]/1902. Graphite pencil on paper. 32 x 43,7 cm. Private collection.

OPP.02:275; PP.02:155; Z.VI:405; TO.97:249p





Femme accroupie. Barcelona. [February]/1902.
Pen & India ink on paper. 8,9 x 9 cm. Musée
Picasso, Paris. Dation 1979.

OPP.02:286; MPP:441; PP.02:035; BF.21*:176p;
BL.91*:50; JR.91:234p

Vieillard nu assis. Barcelona. [February]/1902. India ink
on paper. 13,5 x 9 cm. Catherine Hutin-Blay Collection,
Paris. Formerly Jacqueline Roque Picasso Collection.

OPP.02:334; PP.02:018; Z.XXI:396



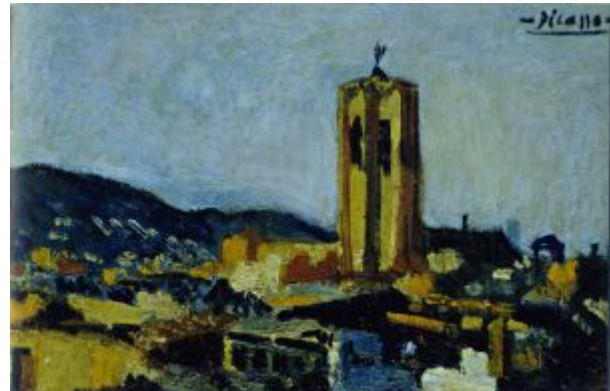


Vieille femme nue debout. Barcelona. February]/1902. India ink & wax crayon [OIC]. 12,5 x 7,5 cm. Private collection.

OPP.02:335; PP.02:019; Z.XXI:397

Clocher de Santa María del Pino, vu de l'atelier d'Angel Fernández de Soto dans 10, Calle Conde del Asalto, Barcelona. Barcelona. [February/1902]. Oil on canvas. 25 x 42 cm. Private collection, Barcelona.

OPP.02:381; PP.00:118





Portrait de Germaine. Barcelona. [End-February]/1902. Oil on canvas. 50,2 x 41,6 cm. Christie's. #29, 1655, 05/02/06.

OPP.02:076; DB.VII:8; LD:31; P.I:725; PP.02:029; Z.XXI:410; EV.14*:188p; JR.91:237p; NM.95:69p; WR.12b:57

Croquis. Barcelona. [Spring]/1902. India ink on paper [Obverse of *Tête de femme et personnages*]. 31 x 20 cm. Private collection.

OPP.02:314; PP.02:062; Z.XXI:319





Tête de femme à l'écharpe. Paris. [Early-March]/1902. Ink on paper (reproduced as *Tête de femme à l'écharpe* in Auba, 03-04/02). S/U. Private collection.

OPP.02:401

Tête de femme à l'écharpe. Barcelona. March~April/1902. Print [After *Tête de femme à l'écharpe*] (reproduced in Auba, 03-04/02). S/U. Private collection.

OPP.02:117; P.I.:723; PP.02:064





Autoportrait à la plage. Barcelona. [Spring]/1902. Ink & colored pencils on back of a Junyer business card. 9 x 13,3 cm. Private collection. Formerly Christie's. #15, 9408, 06/07/00; Christie's. #7, 11/13/89; Sebastià Junyer-Vidal Collection, Barcelona.

OPP.02:106; DB.DVII:8; P.I:743; PP.02:016; Z.I:129; AC.46:107; BS.55:18; DK.61*:53; HW.98*:18; LA.71a*:13; NS.01:295; PB.21:60; SR.66*:45a; TO.94:222p; YP.13:54p

Femme assise au capuchon. Barcelona. [Late-March]/1902. Oil on canvas [Reverse of *Mère et enfant (Baladins)*]. 90 x 71 cm. Staatsgalerie Stuttgart. (Inv 2532). Erworben mit Lotto-Mitteln 1959.

OPP.02:031; DB.VII:2; LD:26; P.I:730; PP.02:008; Z.I:119; AC.46:166; AP.89:32p; AP.97:39p; BP.62:72; DC.91:41p; EB.70:10p; EV.15:209p; FP.73:137p; GM.81*:1; IC.05*:2; LG.92:21; MM.97:97p; MR.21:3.12; MU.55*:8; PA.19d:43p; PA.19h:96





La miséreuse accroupie. Barcelona. [Early-Spring]/1902. Oil on canvas [Overlayer of *La miséreuse accroupie et paysage (Parc del Laberint d'Horta)*]. 101,3 x 66 cm. Art Gallery of Ontario, Toronto. (Inv 83.316). Gift of Margaret Dunlap Crang, 1983.

OPP.02:001; DB.VII:5; LD:25; P.I:726; PP.02:037; Z.I:121; AP.11:27p; AP.89:31p; AP.97:39p; AU.89*:6; BF.21*:173p; BF.21:61p; BP.62:71; BS.19*:89p; EV.15:213p; JP.11b:27p; JR.91:239p; MM.78*:31; MM.97*:85; PA.02c*:14; PA.19h*:93; PD.65:36p; TO.64*:13; UP.00:95; VO.66*:n/a; WW.91:93p

Femme fatiguée, ivre. Barcelona. [Early-Spring]/1902~[1903]. Oil on canvas [Overlayer of *Homme debout*]. 80 x 62 cm. Kunstmuseum Bern. (Inv G.79.048). Stiftung Othmar Huber.

OPP.02:003; DB.VII:3; LD:27; P.I:732; PP.02:009; Z.I:120; AC.46:134; AP.89:28p; AP.97:36p; BD.16*:2; BF.21:17p; BF.21:62p; BS.19*:90p; BS.66a*:3; BW.13:28p; CG.93:236; CH.10*:81p; DC.91:42p; EV.15:211p; JG.84*:151; JL.51:19; JP.66:74; KB.01*:10; LG.92:17; MA.22b:83p; MI.53*:2; MU.14*:n/a; MU.37*:n/a; PA.19h:92; PD.09:31p; PL.89:26; TO.68:4; UP.00:92





Nu assis aux bras croisés. [Barcelona]. [Early-Spring]/1902. Pen, brown ink, tinted wash with scraping on oval paper cut-out [Obverse of *Scène de cirque*]. 21,5 x 14 cm. Musée Picasso, Paris. Dation 1979.

OPP.02:180; MPP:460.r; PP.02:076; Z.XXI:347; BF.21:284p; BL.91*:51; DK.99:301p; PA.19h*:113; PP.20*:300; SY.11*:n/a; WR.12b:133

Autoportrait et femme. Barcelona. [Spring]/1902. Ink & colored pencil on business card. 8 x 12 cm. Private collection, Paris.

OPP.02:018; P.I:766; PP.02:114; Z.XXI:409; BP.62:119; PB.21:63; YP.13:76p





Le maquereau (Composition allégorique). Barcelona.
[Spring]/1902. Pen, sepia wash & colored pencil on business card.
13,9 x 9 cm. Museu Picasso, Barcelona. Legado Garriga Roig, 1953.

OPP.02:026; MPB:50.497; PP.0203:066; BA.09a*:n/a;
BA.99d*:n/a; DW.05:19p; JC.01a*:33; PA.19h*:111; TK.02*:n/a;
TO.97*:223; WR.80*:51p; WW.91:91p

Deux femmes nues. Barcelona.
[Spring]/1902. Pen, sepia wash & colored pencil on printed card. 9 x 13,3 cm. Museu Picasso, Barcelona. Legado Garriga Roig, 1953.

OPP.02:060; DB.DIV:6; MPB:50.487;
PP.0203:039; Z.XXI:282; PA.07a*:90p;
PA.19h*:106; PB.81*:12A.9; TK.02*:n/a;
TO.97*:221





'El Virgo'. Barcelona. [Spring]/1902. Sepia ink & watercolor touches on paper. 17,8 x 23,8 cm. Museu Picasso, Barcelona. Legado Garriga Roig, 1953.

OPP.02:062; MPB:50.496; PP.0203:065;
BA.09a*:n/a; JC.01a*:32; PA.19h*:110;
PD.09:48p; ST.88*:n/a; TK.02*:n/a; TO.97*:224

Femme assise aux bras croisés. Barcelona.
[Spring]/1902. Pen, ink & blue wax crayon on card. 13 x 8,9
cm. Christie's. #16, 2410, 05/04/10. Formerly Sebastià
Junyer-Vidal Collection, Barcelona.

OPP.02:065; PP.02:020; Z.I:138; AC.46:114; DK.61*:57;
SD.69*:3p





Sebastià Junyer-Vidal le satyre. Barcelona. [Spring]/1902. Color crayons on paper. 36,9 x 27 cm. Galeria Mayoral, Barcelona. 2008. Formerly Sotheby's. #258, L05006, 02/09/05; Christie's. #537, 6318, 06/29/00.

OPP.02:071; PP.0203:047; AC.09:81p; WS.02*:41

Autoportrait avec nu. Barcelona. [Spring]/1902. Brown ink & colored pencil on business card. 9 x 13,3 cm. Private collection, Germany. Christie's. #17, 9408, 06/07/00; Christie's. #8, 11/13/89.

OPP.02:078; PP.0203:071; DK.61*:63; JC.01a*:25; JR.91:280p; KR.11*:35p; LA.71a*:15; MD.02*:51p; PB.21:61; RD.11*:13; SR.66*:45c; YP.13*:33





Buste de femme nue. [Barcelona]. [Spring]/1902. India ink on business card. 13 x 9 cm. Private collection, Germany. Formerly Sebastià Junyer-Vidal Collection, Barcelona.

OPP.02:081; PP.02:103; Z.XXI:401; MD.02*:52p; RD.00*:23

Femme et enfant assis par terre. Barcelona. [Spring]/1902. Pen & color pencil on business card. 13,3 x 9 cm. Galerie Fischer Auktionen AG. 2007. Formerly Sebastià Junyer-Vidal Collection, Barcelona.

OPP.02:086; PP.02:028; Z.I:154; Z.VI:71; KR.11*:70p; RD.11*:14





Portrait de Alejandro Riera. [Barcelona].
[Spring]/1902. India ink on Le Journal, 10/17/01
[Obverse of *Portrait de Alejandro Riera*]. S/U.
Private collection.

OPP.02:087; PP.02:087; Z.XXI:371; AB.00*:26;
AB.03:28; BA.03a*:44a

Portrait de Alejandro Riera. [Barcelona].
[Spring]/1902. India ink on Le Journal, 10/17/01 [Reverse
of *Portrait de Alejandro Riera*]. S/U. Private collection.

OPP.02:088; PP.02:088; PP.02:089; Z.XXI:372-373;
AB.00*:27; AB.03:29; BA.03a*:44b





Homme et femme au parasol. [Barcelona]. [Spring]/1902. India ink on envelope. 19,5 x 15,5 cm. Private collection.

OPP.02:089; PP.02:102; Z.XXI:395; BA.03a*:45

Femme accroupie aux bas rouges. Barcelona. [Spring]/1902. Watercolor on beige paper. 27,7 x 20 cm. Sotheby's. #403, 6489, 11/04/93. Formerly Christie's. #355, 11/29/88.

OPP.02:097; DB.VII:16; LD:40; P.I:769; PP.02:071; Z.XXI:340; BS.55:19; EB.70:5p; EM.55:29p





Couple assis vu de dos. Barcelona. [Spring]/1902. Gouache on paper [OIC]. 43 x 33 cm. André de Ganay Collection, Buenos Aires.

OPP.02:098; DB.VII:14; LD:43; P.I:747; PP.02:069; Z.XXI:339; BR.83a:14p; MJ.55*:7; MU.55*:10

Nu couché. Barcelona. [Spring]/1902. Pen & ink, wash & colored crayon on printed business card. [8,5 x 13] [9 x 14] 9,3 x 13,4 cm. Sotheby's. #166, N08988, 05/08/13. Formerly Alex M. Lewyt Collection, NY; Sebastià Junyer-Vidal Collection, Barcelona.

OPP.02:100; DB.DVII:2; P.I:762; PP.02:113; Z.XXI:408





Femme au bras gauche levé. Barcelona. [Spring]/1902. Ink & colored pencils on business card. 13,5 x 9 cm. Christie's. #16, 9408, 06/07/00. Formerly Christie's. #10, 11/13/89; Sebastià Junyer-Vidal Collection, Barcelona.

OPP.02:101; DB.DVII:3; PP.02:027; Z.I:153; DK.61*:59; LA.71a*:16; SR.66*:45d

L'entrevue (Les deux sœurs) (Étude). Barcelona. [Spring]/1902. Sepia ink on paper. 20,8 x 13,4 cm. Sotheby's. #356, N08486, 11/05/08. Formerly Rosengart Collection, Luzern.

OPP.02:102; DB.DVII:4; LD:39A; P.I:735; PP.02:042; Z.VI:436; HS.94:10p; WR.12b:54





Nu endormi et esquisses de nus. Barcelona.
[Spring]/1902. Pen & ink on paper. 37 x 53 cm.
Max G. Bollag (Galerie Bollag), Zurich.

OPP.02:103; DB.DVII:5; PP.02:094; Z.XXI:380;
FR.65a*:13; ZU.25*:162

Le peintre Sebastià Junyer-Vidal et sa vision de Majorque. Barcelona.
[Spring]/1902. India ink & colored pencil on paper. 16 x 22 cm. Private collection, Belgium.

OPP.02:105; DB.DVII:7; PP.0203:045;
Z.VI:495; AC.46:106; MF.01:73p;
TO.94:227p; WR.12b:69





Misérable au bord de la mer. Barcelona. [1901] [Spring]/1902. Ink & colored pencils on back of a Junyer business card [OiC]. 14 x 9 cm. Private collection. Formerly Sebastià Junyer-Vidal Collection, Barcelona.

OPP.02:107; DB.DVII:9; LD:37A; P.I:745; PP.02:083; Z.I:151; AC.46:113

Femme assise aux bras croisés. Barcelona. [Spring]/1902. Colored crayons & wash on back of a Junyer business card [OiC]. 14 x 9 cm. Phillip P. Weisberg Collection, NY. Formerly Sebastià Junyer-Vidal Collection, Barcelona.

OPP.02:108; DB.DVII:10; PP.02:007; Z.I:114; AC.46:118; JR.62*:8.3; NY.60c*:25





L'anier. Barcelona. [Spring]/1902. [Black crayon] Charcoal on paper. [26 x 19] [26 x 19,5] 26,1 x 19,8 cm. The Cleveland Museum of Art. (Inv 1958.12). Leonard C. Hanna, Jr. Bequest. Formerly Thannhauser Collection.

OPP.02:112; P.I:807; PP.02:080; Z.I:136; AC.46:125; BP.62:125; EM.55:15p; GM.11*:13; JC.40:146p; JG.84*:166; TU.86*:16; UP.00:103

Étreinte et têtes (Étude). Barcelona. [Spring]/1902 [~1903]. India ink on paper. 55 x 38 cm. Marina Picasso Collection. (Inv 00510). Courtesy Galerie Jan Krugier, Geneva.

OPP.02:113; PP.02:097; Z.XXI:386; JG.84*:155; MP.81*:31; PD.02*:10; TL.89*:9; UP.00:128





Femme au miroir. Barcelona. [Spring]/1902 [1903]. Lead pencil & watercolor on paper. 37,8 x 26,1 cm. Private collection. Courtesy Lefevre Gallery, London. Formerly Marina Picasso Collection. (Inv 00459).

OPP.02:114; DB.A:12; LD:321; P.I:763; PP.02:074; Z.XXI:343; AU.89*:5; JG.84*:160; JP.11b:57p; JR.91:244p; MP.81*:24; NS.01:71; WR.12b:101

L'entrevue (Les deux sœurs) (Étude). Barcelona. [Spring]/1902. Pencil on paper. 21,7 x 16,1 cm. Museu Picasso, Barcelona. Donation 1970.

OPP.02:120; C:270; MPB:110.483; P.I:738; PP.02:038





Tête de profil et études. Barcelona.
[Spring]/1902 [1903]. Pen & ink on paper. [17,3 x
16,8] 17,1 x 17,5 cm. Museu Picasso, Barcelona.
Donation 1970.

OPP.02:124; C:917; MPB:110.488; P.I:748;
PP.02:124; PB.81*:6A.2

Femme assise de dos. Barcelona. [1901~]
[Spring]/1902. Pen & ink on paper. 13,5 x 12 cm.
Museu Picasso, Barcelona. Donation 1970.

OPP.02:127; C:921; MPB:110.445; P.I:755;
PP.02:121





Nu accroupi. Barcelona. [Spring]/1902. India ink & watercolor [OIC]. [24,6] 24 x 31 cm. The Picasso Estate.

OPP.02:132; DB.A:13; LD:319; P.I:768;
PP.02:073; Z.XXI:341

Vieillard debout les bras croisés. Barcelona.
[Spring]/1902. Pen, ink & colored wax crayons on card. 13 x
8,9 cm. Christie's. #15, 2410, 05/04/10. Formerly Sebastià
Junyer-Vidal Collection, Barcelona.

OPP.02:136; PP.02:021; Z.I:139; AC.46:115; DK.61*:56;
SD.69*:3p





Femme nue au chien. Barcelona. [Spring]/1902.
Pen & brown ink & colored wax crayons on card.
9,1 x 13,3 cm. Christie's. #1009, 12070,
05/13/16.

OPP.02:169; PP.02:011; Z.I:124; KY.80*:62;
PL.91*:n/a; WT.92*:n/a

Course de taureaux: l'arrastre.
Barcelona. [Spring]/1902. Pencil on paper.
32,5 x 46,8 cm. Musée Picasso, Paris.
Dation 1979.

OPP.02:177; MPP:445; PP.02:110;
Z.XXI:407; BL.91*:8; MM.97:305p



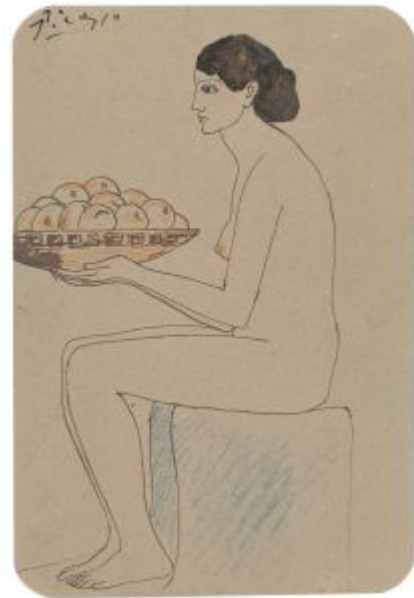


Homme, femme et enfant dans une barque. [Barcelona].
[Spring]/1902. Pen, black ink & tinted wash on paper. 31,5 x 21,7
cm. Musée Picasso, Paris. Dation 1979.

OPP.02:186; MPP:475; PP.02:099; Z.XXI:389; BF.21*:199p;
BL.91*:67; WS.95a*:22

Femme nue au panier de fruit. Barcelona. [Spring]/1902.
Pen, ink & colored wax crayons on business card. 13 x 8,9
cm. Christie's. #17, 2410, 05/04/10. Formerly Sebastià
Junyer-Vidal Collection, Barcelona.

OPP.02:193; PP.02:025; Z.I:146; BP.62:146; DK.61*:55;
SD.69*:n/a





Femme au bras droit levé. [Barcelona]. [Spring]/1902. Ink & wax crayon on paper business card. [14 x 8,9] [13,3 x 9,3] 13,3 x 9.2 cm. The Metropolitan Museum of Art, NYC. (Inv 1976.201.29) Bequest of Joan Whitney Payson, 1975. Formerly Sebastià Junyer-Vidal Collection, Barcelona.

OPP.02:194; PP.02:026; Z.I:152; GT.10*:19; JG.84*:163; PA.98b*:n/a; RD.00*:24

Buste de femme nue. Barcelona. [Spring]/1902. Pen, ink & rose wax crayon on business card. 13 x 8,9 cm. Christie's. #18. 2410, 05/04/10. Formerly Sebastià Junyer-Vidal Collection, Barcelona.

OPP.02:195; PP.03:086; Z.I:173; DK.61*:60; SD.69*:3p





Couple nu. Barcelona. [Spring]/1902. Pen, ink & colored wax crayons on business card. 13 x 8,9 cm. Christie's. #19. 2410, 05/04/10. Formerly Sebastià Junyer-Vidal Collection, Barcelona.

OPP.02:196; PP.02:013; Z.I:126; AC.46:146; DK.61*:52; SD.69*:3p



Bateliers nus. Barcelona. [Spring]/1902. Pen, ink & blue wax crayon on business card. 13,3 x 8,9 cm. Christie's. #20, 2410, 05/04/10. Formerly Sebastià Junyer-Vidal Collection, Barcelona.

OPP.02:197; PP.02:014; Z.I:127; AC.46:103; DK.61*:51; SD.69*:3p



Caricatures de Miquel Utrillo. Santiago Rusiñol, Sebastià Junyer-Vidal, Ricard Canals, Pere Manyac et Octavi Canals.
Barcelona. [Spring]/1902. Pen & ink on paper. 29,4 x 18,8 cm.
Private collection.

OPP.02:198; PP.03:172; Z.VI:526; AC.09:27p; EV.08:67;
EV.10:314p

Deux personnages assis de dos et coups de crayon.
[Barcelona]. [Spring]/1902. Graphite on laid paper. 22,5
x 16,7 cm. Museu Picasso, Barcelona. Donation 1970.

OPP.02:215; MPB:110.457; PP.02:123





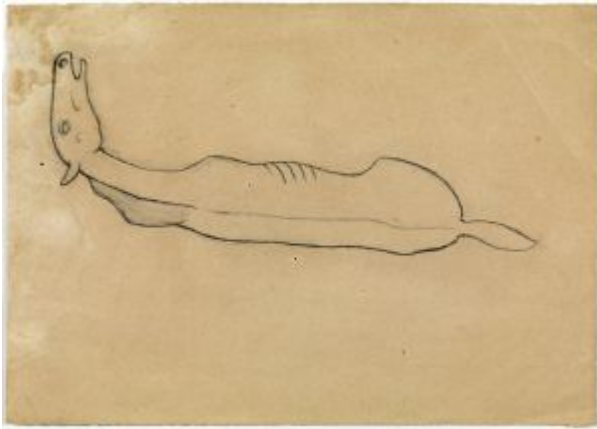
Deux femmes. Barcelona. [Spring]/1902. Pen, sepia ink & graphite pencil on paper. 11,1 x 16,1 cm. Museu Picasso, Barcelona. Donation 1970.

OPP.02:216; C:914; MPB:110.449; PP.02:120

L'atelier. Barcelona. [Spring]/1902. Pen & sepia ink on paper. 15 x 12,2 cm. Museu Picasso, Barcelona. Donation 1970.

OPP.02:217; C:211; MPB:110.446; PP.02:122;
BF.21*:T210p; GT.10:30.6; JR.91:269p;
MF.10*:117p; PM.97:4p





Cheval mourant. Barcelona. [Spring]/1902. Lead pencil on paper [Obverse of *Étude de cheval*]. 16,2 x 22,7 cm. Museu Picasso, Barcelona. Donation 1970.

OPP.02:230; C:240; MPB:110.486; PP.02:109; BA.11*:n/a; BL.91:72; MG.10a*:n/a

Étude de cheval. Barcelona. [Spring]/1902. Lead pencil on paper [Reverse of *Cheval mourant*]. 16,2 x 22,7 cm. Museu Picasso, Barcelona. Donation 1970.

OPP.02:251; MPB:110.486r





Buste de femme. Barcelona. [Spring]/1902. Pen & brown ink on paper laid down on card. 15,6 x 10,3 cm. Christie's. #154, 14185, 05/16/17. Formerly Thomas Ammann Fine Art, Zürich; Sotheby's. #188, L12005, 02/09/12.

OPP.02:255; BE.34b*:31; KN.55*:n/a; KZ.32*:262

Nu allongé. Barcelona. [Spring]/1902. Pen, ink & wax crayon on the back of an advertising card. 9,1 x 13,3 cm. Christie's. #224, 8050, 02/08/12.

OPP.02:256; TO.97:248p





Nu allongé. Barcelona. [Spring]/1902. Color wax crayons, pen & brown ink on card. 9 x 13,3 cm. Pérez Simón Collection, Mexico. Formerly Christie's. #325, 9354, 05/09/00; Christie's. #9, 11/13/89.

OPP.02:259; PP.02:012; Z.I:125; DK.61*:54; JR.91:280p; LA.71a*:12; MA.17b*:105

Nu debout, sans tête. Barcelona. [Spring]/1902. India ink on paper. 16 x 11 cm. Private collection.

OPP.02:261; PP.02:075; Z.XXI:346; SP.96:19





Femme allongée. [Barcelona]. [Spring]/1902.
Graphite on paper. 26 x 36,5 cm. Galería Leandro Navarro, Madrid.

OPP.02:265; FC.00*:14; MA.23b*:n/a;
MA.93c*:n/a; PN.95*:n/a

Homme debout. Barcelona. [Spring/1902]. X-radiograph
of oil on canvas [Underlayer of *Femme fatiguée, ivre*]. 80
x 62 cm. Kunstmuseum Bern. Stiftung Othmar Huber.

OPP.02:272; JG.84*:310p





Mendiant et fillette. Barcelona. [Spring/1902]. X-radiograph of oil on canvas [Underlayer of *La coiffure*]. 174,9 x 99,7 cm. The Metropolitan Museum of Art, NYC. (Inv 53.140.3). Catherine Lorillard Wolfe Collection, Wolfe Fund, 1951. Acquired from the Museum of Modern Art, Anonymous Gift, 1951.

OPP.02:274; GT.10:30.7

Pere Romeu et homme assis. Barcelona. [Spring]/1902. Pencil on paper [Reverse of *Affiche pour Els Quatre Gats: autoportrait avec Pere Romeu, Rocarol, Fontbona, Àngel Fernández de Soto, Sabartés*]. 33,3 x 51,4 cm. Private collection.

OPP.02:279; MM.78:102p





Sebastià Junyer-Vidal et autres figures.
Barcelona. [Spring]/1902. Ink, wash & pencil on paper. 28 x 38,1 cm. Private collection.

OPP.02:280; MM.78*:32

Sebastià Junyer-Vidal. Barcelona. [Spring]/1902. Ink & color pencils. S/U. Private collection.

OPP.02:281; PP.0203:046; Z.VI:498; TO.94:228p





Jeune fille nue debout. [Barcelona]. [Spring/1902] [Early]/1903 [1904]. Oil on canvas. 110 x 70 cm. Private collection. Formerly Estate of Jacqueline Roque Picasso.

OPP.02:283; LD:320; PP.02:085; Z.XXI:366; GL.84*:52; MA.86*:1; MM.85a*:2; WW.91:108p

Caridad. Barcelona. [Spring]/1902. Ink wash on paper. 27 x 37 cm. Private collection.

OPP.02:288; PP.02:096; Z.XXI:391; BL.91:86p





Femme nue caricaturée. [Barcelona]. [Spring]/1902. Pen & India ink on paper. 21 x 13,5 cm. Private collection.

OPP.02:289; PP.02:100; Z.XXI:393; BL.91:86p

Le peintre Sebastià Junyer-Vidal. Barcelona. [Spring]/1902. Brown ink & color crayon on business card [OIC]. 9 x 14 [13,2] cm. Christie's. #155, 11/29/94. Formerly Sebastià Junyer-Vidal Collection, Barcelona.

OPP.02:297; PP.0203:049; Z.VI:497; AC.46:110; JP.66:61; TO.94:227p





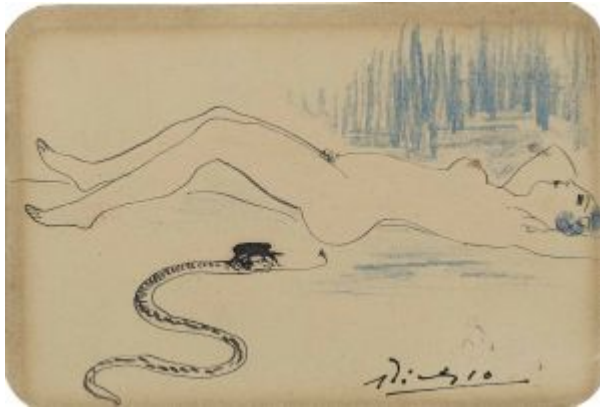
Couple et enfants nus. Barcelona. [Spring]/1902. Ink & colored pencils on card. 13,3 x 9,2 cm. Sotheby's. #68, PF1706, 03/23/17.

OPP.02:298; PP.02:022; Z.I:140

Homme et femme blessés. Barcelona. [Spring]/1902. India ink on reverse on business card. 13,5 x 9 cm. Private collection.

OPP.02:301; PP.0203:032; Z.VI:511; MG.04b*:18





Nu et serpent. Barcelona. [Spring]/1902. Colored wax crayons & pen & black ink on card. 9 x 13,2 cm. Christie's. #179, 15972, 05/16/18.

OPP.02:306; NY.60c*: 34

Nu debout, sans tête. Barcelona. [Spring]/1902. India ink on paper. 13,5 x 9 cm. Private collection.

OPP.02:315; PP.02:065; Z.XXI:321





Nu debout, sans tête. Barcelona. [Spring]/1902. India ink on paper.
20 x 13 cm. Private collection.

OPP.02:316; PP.02:066; Z.XXI:322

Tête de femme et personnages.
Barcelona. [Spring]/1902. India ink on paper [Obverse of *Croquis*]. 20 x 31 cm.
Private collection.

OPP.02:317; PP.02:063; Z.XXI:323





Études. Barcelona. [Spring]/1902. India ink on paper. 20 x 31 cm. Private collection.

OPP.02:318; PP.02:106; Z.XXI:406

Nu assis. Barcelona. [Spring]/1902. Graphite on paper. 20 x 20 cm. Private collection.

OPP.02:319; PP.02:078; Z.XXI:349



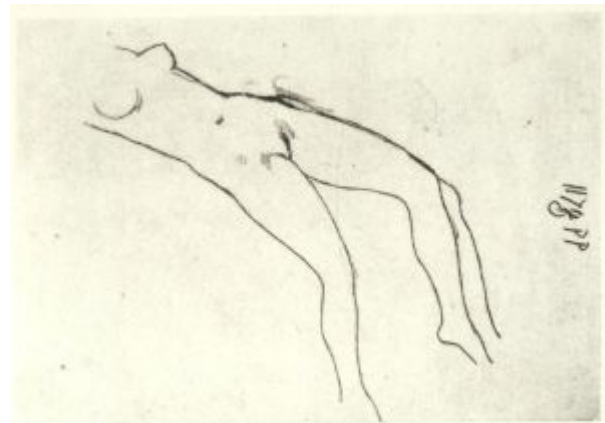


Homme et son âne croisant une femme à la cruche. Barcelona. [Spring]/1902. Gray crayon on paper. 13 x 21 cm. Private collection.

OPP.02:321; PP.02:079; Z.XXI:363

Nu couché. Barcelona. [Spring]/1902. India ink on paper. 15,5 x 22 cm. Private collection.

OPP.02:322; PP.02:090; Z.XXI:375





Trois personnages agenouillés. Barcelona. [Spring]/1902. India ink on paper. 38,5 x 55 cm. Private collection.

OPP.02:323; PP.02:091; Z.XXI:376

Nu couché. Barcelona. [Spring]/1902. India ink on paper. 22 x 15,5 cm. Private collection.

OPP.02:324; PP.02:092; Z.XXI:377





Nu couché. Barcelona. [Spring]/1902. India ink on paper. 17 x 17 cm. Private collection.

OPP.02:325; PP.02:093; Z.XXI:378

Femme attablée. Barcelona. [Spring]/1902. Gouache & India ink [OïC]. 15,5 x 11 cm. Private collection.

OPP.02:330; PP.02:095; Z.XXI:384





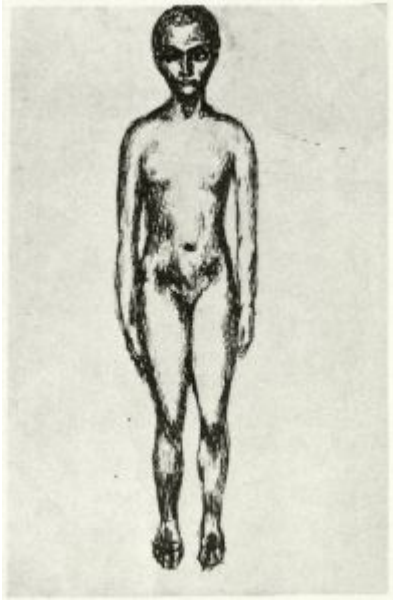
Nu debout, de dos. Barcelona. [Spring]/1902. India ink on paper. 21 x 13,5 cm. Private collection.

OPP.02:331; PP.02:098; Z.XXI:387

Femme enfant un bas. Barcelona. [Spring]/1902. Wax crayon on paper. 33,5 x 12 cm. Private collection.

OPP.02:333; PP.02:101; Z.XXI:394





Femme debout. Barcelona. [Spring]/1902. Pen & India ink on paper. 27 x 21 cm. Private collection.

OPP.02:357; PP.02:084; Z.VI:450; LE.21*:206

Buste de femme. Barcelona. [Spring]/1902. Color wax crayon & pen & brown on business card [OIC]. 13,3 x 9 cm. Private collection. Formerly Christie's. #11, 11/13/89; Sebastià Junyer-Vidal Collection, Barcelona.

OPP.02:398; PP.02:119





L'entrevue (Les deux sœurs). Barcelona. [Spring~Summer]/1902. Oil on canvas pasted on panel. 152 x 100 cm. The State Hermitage Museum, Saint Petersburg. (Inv GE.9071). Acquisition 1948. Formerly S. I. Shchukin Collection, Moscow.

OPP.02:004; DB.VII:22; LD:39; P.I:739; PP.02:046; Z.I:163; AC.46:135; AP.11:28p; AP.89:8; AP.97:41p; BA.17:179p; BF.21:64p; BS.19:82p; BS.22:19p; BW.03:10; DA.03:11; DC.91:44p; DK.99:297p; EC.02:72; EV.15:219p; JP.11b:31p; JR.91:223p; LG.92:18; MA.14:90; MM.97:291p; MM.97:38p; MU.18:129p; NM.95:65p; PA.19h:94; PD.09:50p; PD.94:25; RP.81:2.5; TH.75:14; TK.64*:4; UP.00:105; UW.84:57p; WR.12b:53; WR.80:46p; WW.91:93p

Une famille catalane. Barcelona. [Spring~Summer]/1902. Pen & ink on paper [Reverse of *Une famille catalane*]. [41 x 33] 30,5 x 23,5 cm. Christie's. #224, 2312, 05/05/10.

OPP.02:085; P.I:775; PP.02:139; WT.92*:n/a





Une famille catalane. Barcelona. [Spring~Summer]/1902.
Pen & ink on paper [Obverse of *Femme nue de dos les jambes croisées*]. [41 x 33] 30,5 x 23,5 cm. Galerie Thomas, München.
Formerly Christie's. #224, 2312, 05/05/10.

OPP.02:134; P.I:773; PP.02:138; WT.92*:n/a

Tête d'homme au fes. Barcelona [Paris].
[Spring~Summer]/1902. Lead pencil on paper. 24 x
19 cm. Museu Picasso, Barcelona. Donation 1970.

OPP.02:228; C:233; MPB:110.500; PP.02:127;
PD.06*:n/a





Croquis. Barcelona. [Spring~Summer]/1902. Pen & ink on paper. 28,5 x 36 cm. Museu Picasso, Barcelona. Donation 1970.

OPP.02:233; C:955; MPB:110.545; PP.02:133;
BF.21*:T165p; BF.21:76p

Croquis divers. Barcelona. [Spring~Summer]/1902. Pen & ink on paper. 23,4 x 31,4 cm. Museu Picasso, Barcelona. Donation 1970.

OPP.02:235; C:933; MPB:110.532;
PP.02:131





Femme caressant une fille. Barcelona [Paris].
[Spring~Summer]/1902. Graphite on paper. [25,3
x 26] 25,1 x 25,9 cm. Museu Picasso, Barcelona.
Donation 1970.

OPP.02:237; C:951; MPB:110.543; PP.02:132

Femme et caricatures diverses. Barcelona.
[Spring~Summer]/1902. Pen, ink & lead pencil on paper.
32 x 22,5 cm. Museu Picasso, Barcelona. Donation 1970.

OPP.02:244; C:936; MPB:110.526; PP.02:129





Le sculpteur Emili Fontbona et autres croquis.
Barcelona. [Spring~Summer]/1902. Pen & ink on paper. 23,4 x 31,4 cm. Museu Picasso, Barcelona. Donation 1970.

OPP.02:246; MPB:110.532r; PP.02:130

Garçon avec un bâton dans sa main.
Barcelona. [Spring~Summer]/1902. Pen & ink on paper. 28,5 x 36 cm. Museu Picasso, Barcelona. Donation 1970.

OPP.02:247; C:919; MPB:110.545r;
PP.02:134





Pied. Barcelona. [Spring~Summer]/1902. Lead pencil on paper. 24 x 19 cm. Museu Picasso, Barcelona. Donation 1970.

OPP.02:249; MPB:110.500r; PP.02:128

Pie de lampe et un fragment de paysage. Barcelona. [Spring~Summer]/1902. Conté crayon on paper. 16,7 x 22,2 cm. Museu Picasso, Barcelona. Donation 1970.

OPP.02:250; MPB:110.489r; PP.02:126



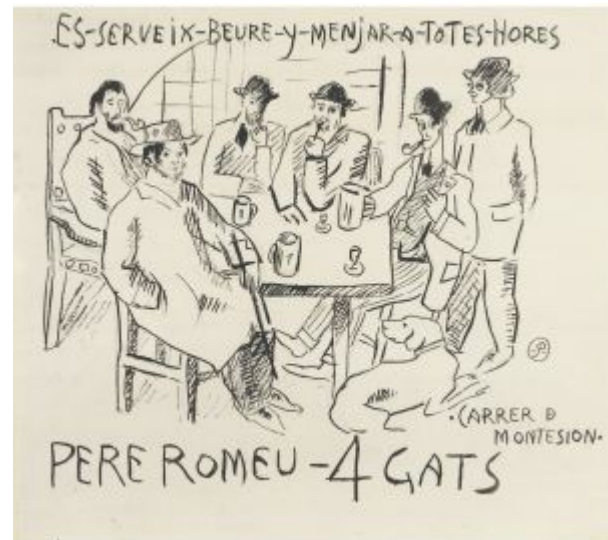


Femmes s'habillant. Barcelona. [Spring]/1902. India ink on paper. 31,5 x 20 cm. Private collection.

OPP.02:313; PP.02:061; Z.XXI:318

Affiche pour Els Quatre Gats: autoportrait avec Pere Romeu, Rocarol, Fontbona, Àngel Fernández de Soto, Sabartés. Barcelona. [April]/1902. Pen & ink on paper [Obverse of *Pere Romeu et homme assis*]. 33,3 x 51,4 cm. Sotheby's. #284, N08988, 05/08/13. Formerly Sotheby's. #189, L12005, 02/09/12; Private collection, Ontario, Canada.

OPP.02:067; P.I:716; PP.02:050; Z.VI:190; DR.91:224; EH.96:26p; EM.55:8p; GC.96:16p; IW.93:10p; JG.84*:144; JP.66:84p; JR.91:245p; MM.78*:30; MM.97*:79; PB.21:56; PD.65:21p; TO.88*:n/a; TO.95a:188p; TO.96a:188p; WW.73:20p





Les adieux du pêcheur. Barcelona. [Late-Spring]/1902. Oil on canvas. 46,3 x 38 cm. Tel Aviv Museum of Art. Moshe and Sara Mayer Collection. Formerly Sotheby's. #9, 07/01/80; Sotheby's. #63, 04/21/71.

OPP.02:010; DB.VII:19; LD:38; P.I:741; PP.02:081; Z.XXI:365; BS.56a*:39; TH.75:12; TO.94:220p; WW.91:92p

Mère et enfant à la mer. Barcelona. [Late-Spring]/1902. Oil on wood panel. 26,8 x 13,4 cm. Museu Picasso, Barcelona. Donation 1970.

OPP.02:021; C:246; LD:318; MPB:110.037; P.I:771; PP.02:135; BF.21*:192p; BF.21:93p; JG.84*:161; LU.86*:n/a; TK.00*:n/a; TK.02*:n/a; TO.94*:161; TO.97*:208; WS.95a*:16





Mère et enfant. Barcelona. [Late-Spring]/1902. Oil on canvas. 40,5 x 33 cm. Scottish National Gallery of Modern Art, Edinburgh. (Inv GMA.967). Presented by Sir Alexander Maitland in memory of his wife Rosalind 1960.

OPP.02:033; DB.VII:18; LD:35; P.I:749; PP.02:086; Z.XXI:367; MA.17b*:92; MM.97*:B81; TO.68:6; WW.91:89p

Pierreuses au bar. Barcelona. [Early-May]/1902. Oil on canvas. 80 x 91,5 cm. Hiroshima Museum of Art. Formerly Walter P. Chrysler, Jr. Collection, NY; Gertrude Stein Collection.

OPP.02:023; DB.VII:13; LD:44; P.I:754; PP.02:070; Z.I:132; AB.39a*:18; AB.39b*:153; AB.46:26p; AC.46:136; AP.11:26p; AP.89:32p; AP.97:39p; BF.21*:181p; BF.21:61p; BO.38*:3; BP.62:74; BS.19:81p; DY.60*:112; EV.15:217p; FA.70*:27; GA.14:16-17p; JB.92:46p; JL.51:7; JL.66*:281; JR.91:240p; LG.92:20; MM.11a:124p; MM.97*:83; NY.12a*:229; NY.39c*:16; PA.19h*:90; PD.09:11p; PL.56*:88; PW.58*:43; RI.41*:151; RK.94:98p; RP.60*:16; SC.11*:229; TH.75:15; TO.68:7; TU.15:36p; UP.00:101; WR.80*:48p; WW.91:102p





Femme nue. Barcelona. [Early-May]/1902. Oil on canvas. 46 x 40 [38,5] cm. Private collection, Paris.

OPP.02:027; DB.VII:17; LD:41; P.I:750; PP.02:058; Z.VI:449; AC.46:137; AC.81:36p; EM.55:19p; GD.77:9p; JP.66:75; JR.91:240p; KS.62:2; LY.53a*:7; MJ.55*:5; PD.09:32p; TH.75:16; UP.00:100

Croquis allégorique. Barcelona. May/1902. Lead pencil on paper. 28 x 22,5 [22,8] cm. Museu Picasso, Barcelona. Donation 1970.

OPP.02:207; C:960; MPB:110.523; PP.02:117; JC.01a:88p; JG.13*:7; JP.11b:56p; JR.91:243p; MF.01:67p; TO.97:247p; WR.12b:144; YP.13*:n/a





Croquis allégorique. Barcelona. May/1902. Graphite pencil on paper [Obverse of *Paysage de montagne avec arbres*]. 28,1 x 22,8 cm. Museu Picasso, Barcelona. Donation 1970.

OPP.02:208; C:961; MPB:110.522; PP.02:115; JG.13*:6; MF.01:67p; WR.12b:145

Empreinte de Croquis allégorique. Barcelona. May/1902. Conté pencil & graphite pencil on paper. 28 x 22,5 cm. Museu Picasso, Barcelona. Donation 1970.

OPP.02:218; MPB:110.523r





Paysage de montagne avec arbres. Barcelona. May/1902. Graphite pencil on paper [Reverse of *Croquis allégorique*]. 22,8 x 28,1 cm. Museu Picasso, Barcelona. Donation 1970.

OPP.02:221; MPB:110.522r; PP.02:116

Mère et enfant au bord de la mer (À Dr. Josep Fontbona). Barcelona. [End-Spring]/1902. Oil on canvas [Overlayer of *Femme au verre* and *Femme au verre*]. 81,7 x 59,8 cm. Pola Museum of Art, Hakone, Kanagawa, Japan. (Inv P08-0032).

OPP.02:011; DB.VII:20; LD:37; P.I:746; PP.02:082; Z.VI:478; AC.46:132; AC.81:78p; BF.21*:195p; BF.21:65p; BS.19:81p; EV.15:205p; GP.96:73p; HK.65:51p; JF.94a:16; JG.84*:149; JP.11b:30p; JR.62*:1.14; JR.91:239p; JR.91:239p; LG.92:19; MM.97*:82; NM.95:83p; OD.96:26p; PA.19h*:95; PD.09:34p; RB.97:51p; TO.94:220p; UP.00:106; WR.12b:90; WS.94:17p; WW.91:92p





Femme assise. [Barcelona]. [End-Spring]/1902. Bronze [Cast after *Femme assise*.]. 14,2 x 8,5 x 11,5 cm. Museu Picasso, Barcelona. Also Fine Arts Museums of San Francisco. (Inv 69.30.160). Memorial Gift from Dr. T. Edward and Tullah Hanley, Bradford, Pennsylvania; Sotheby's. #412, L13004, 02/06/13; Dr. & Mrs. Peritz Levinson Collection, NY.

OPP.02:012; MPB:70.244; P.I:751; PP.02:254; WS:1.II; AC.09:44p; AC.81:32p; BA.89*:n/a; BF.21*:179p; CL.06*:n/a; CR.98:56p; DG.88*:n/a; DS.93*:n/a; EV.15:215p; JG.84*:157; JP.66:106; JR.62*:9.2; JR.91:240p; MA.22b*:9; MA.85b*:n/a; MM.97*:84; SD.05:62p; TO.64*:n/a; TZ.12*:n/a; UP.00:96; WO.92*:5; WR.12b:138

Femme aux bas verts. Barcelona. [End-Spring]/1902. Oil on wood board. 27,2 x 12,5 cm. Museu Picasso, Barcelona. Donation 1970.

OPP.02:020; C:245; LD:322; MPB:110.036; P.I:770; PP.02:072; DW.05:25p; EV.15:191p; JC.01a*:22; JG.84*:162; NM.06:58p; PA.07a*:89p; PA.19h*:101; ST.88*:n/a





Le sculpteur Emili Fontbona. Barcelona. [End-pring]/1902. Pen & ink on paper. 45,5 x 31,7 cm. Museu Picasso, Barcelona. Donation 1970.

OPP.02:125; C:236; MPB:110.549; P.I:752; PP.02:017;
AC.09:123p; JR.91:241p; OS.09b*:n/a; PB.81*:8A.5;
TO.95a*:164; WR.12b:112

Femme assise. Barcelona. [End-Spring]/1902.
Unfired clay. 14,5 x 8,5 x 11,5 cm. Musée Picasso,
Paris. Dation 1979.

OPP.02:294; MPP:230; WS:1.I; BJ.19*:n/a;
BS.19*:93p; NY.42b*:n/a; PA.19h*:89; PA.21e*:32;
PA.79a*:5; QU.04*:n/a; TU.15*:1





Tête d'enfant figure pour le faire-part de la naissance du fils du Pere Romeu, propriétaire des Quatre Gats. Barcelona. [Post-12-May]/1902. Print on card. S/U. Private collection.

OPP.02:276; TO.95a:192p; TO.96a:192p

Tête d'enfant figure pour le faire-part de la naissance du fils du Pere Romeu, propriétaire des Quatre Gats. Barcelona. [Post-12-May]/1902. Photoengraving. 10 x 14 cm. Biblioteca de Catalunya, Barcelona. (Inv III(9).10C1).

OPP.02:277; BA.18*:85p; TO.95a:193p; TO.96a:193p





Tête d'enfant figure sur le faire-part de la naissance du fils du Pere Romeu, propriétaire des Quatre Gats. Barcelona. [Mid-May]/1902. India ink on paper. 9 x 14 cm. Private collection.

OPP.02:128; P.I:757; PP.02:105; Z.XXI:402; HK.65:25p; JP.66:72

Portrait de Corina Pere Romeu. Barcelona. [Mid-May~Late-October]/1902. Oil on canvas. 60 x 50 cm. Musée Municipal d'Art Moderne, Céret. On loan from Musée Picasso, Paris. Jacqueline Roque Picasso Collection. Dation 1990.

OPP.02:014; DB.VII:15; LD:30; MPP:1990.4; P.I:758; PP.02:104; Z.I:130; AC.46:164; GB.87:33; GP.32*:10; GR.90*:1; JL.66*:13; JR.91:242p; KZ.32*:15; MD.02*:23p; MM.97*:80; PA.19h*:117; SD.05*:6; TO.68:5; TO.95a*:163; WR.80*:48p





Portrait de Juli González. Barcelona. [End-Spring]/1902. Watercolor & ink on paper. 29 x 24 cm. Sotheby's. #12, PF2315, 12/06/23. Formerly Carmen Martínez Collection, Paris.

OPP.02:015; DB.IV:7; P.I:759; PP.02:060; Z.XXI:189; AN.90*:69; AR.57*:7; CR.07:121p; FR.83*:n/a; JR.91:242p; MA.22b:84p; NY.56q*:93; NY.83h*:32p; PA.89g*:n/a; TO.94*:164

Mère et enfant au bord de la mer. Barcelona. [Summer]/1902. Pastel on paper. 46 x 31,1 cm. Private collection. Courtesy Richard Gray Gallery.

OPP.02:380; DB.VII:21; LD:36; P.I:841; PP.0203:098; Z.I:381; AC.46:168; AP.89:37p; AP.97:44p; BF.21*:193p; BF.21:93p; GM.11*:11; HS.94*:10; JC.40:52p; JR.91:266p; KZ.32*:272; PA.02c*:n/a; PD.09:45p; TO.94:221p; UP.00:123; WS.95a*:17





Course de taureaux: l'arrastre (Lettre à Max Jacob). Barcelona. July/1902. Pencil on paper [Reverse of *Lettre adressée à Max Jacob*]. 20,5 x 26 cm. Galerie Kornfeld und Cie, Bern. #133, 258, 2013.

OPP.02:121; PP.02:108; BP.62:123; HS.94*:9r; PB.21:59

Lettre adressée à Max Jacob.

Barcelona. July/1902. Pen & ink on paper [Obverse of *Course de taureaux: l'arrastre (Lettre à Max Jacob)*]. 20,5 x 26,2 cm. Galerie Kornfeld und Cie, Bern. #133, 258, 2013.

OPP.02:257; PP.02:107; AB.97b*:20; HS.94*:9v; JR.91:249p; LB.58:22p; PB.21:58; PM.97:119p; WR.96:204p





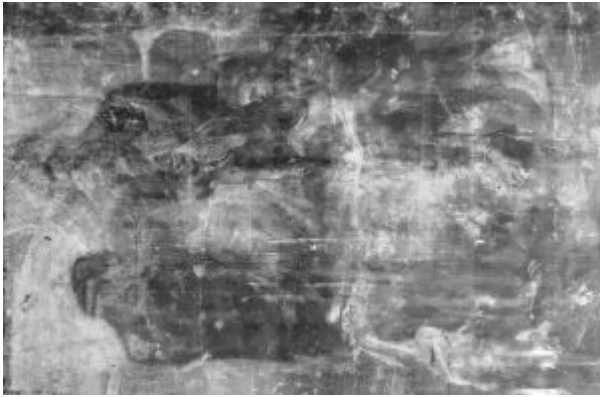
Course de taureaux. Barcelona. [July]/1902. Composite x-radiograph of oil on wood [Underlayer of *Les pauvres au bord de la mer (La tragédie)*]. 105,3 x 69 cm. National Gallery of Art, Washington, DC. (Inv 1963.10.196). Chester Dale Collection, 1962.

OPP.02:390; MM.97:304p

Course de taureaux. Barcelona. [July]/1902. Composite infrared reflectogram of oil on wood [Underlayer of *Les pauvres au bord de la mer (La tragédie)*]. 105,3 x 69 cm. National Gallery of Art, Washington, DC. (Inv 1963.10.196). Chester Dale Collection, 1962.

OPP.02:391



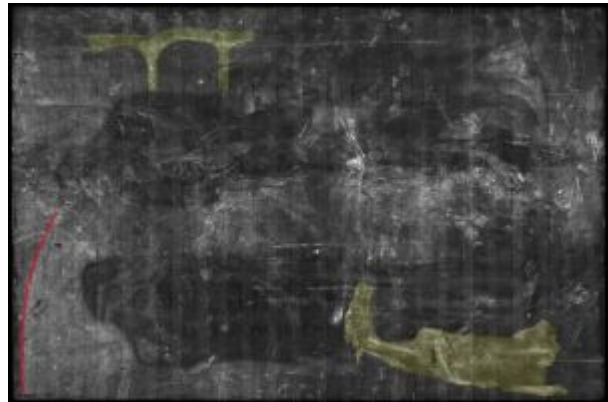


Course de taureaux. Barcelona. [July]/1902. X-radiograph of oil on wood [Underlayer of *Les pauvres au bord de la mer (La tragédie)*]. 105,3 x 69 cm. National Gallery of Art, Washington, DC. (Inv 1963.10.196). Chester Dale Collection, 1962.

OPP.02:392

Course de taureaux. Barcelona. [July]/1902. X-radiograph of oil on wood [Underlayer of *Les pauvres au bord de la mer (La tragédie)*]. 105,3 x 69 cm. National Gallery of Art, Washington, DC. (Inv 1963.10.196). Chester Dale Collection, 1962.

OPP.02:393





La faim. Barcelona. September/1902. Pen & sepia ink on paper. 13,5 x 21,1 cm. Museu Picasso, Barcelona. Donation 1970.

OPP.02:116; C:935; MPB:110.472; P.I:720; PP.02:141; BA.02*:n/a; BA.18*:73p; JR.91:236p; MM.97:88p; PA.19h:81; PB.81*:4A.1; PP.19:113p; TO.95a:201p; TO.96a:201p

Trois nus. Paris. 8-September/1902. Pen & ink on paper. [32,2 x 24] 32 x 24 cm. Sotheby's. #23, L22009, 10/13/22. Formerly Marina Picasso Collection. (Inv 00425).

OPP.02:290; PP.02:140; MP.81*:23





Annotations. Paris. [8-September]/1902. Pen & ink on paper. [32,2 x 24] 32 x 24 cm. Sotheby's. #23, L22009, 10/13/22. Formerly Marina Picasso Collection. (Inv 00425).

OPP.02:291; MP.81*:23

Portrait de Sebastià Junyer-Vidal. Barcelona. October/1902. Ink on paper (Published in *El Liberal*, 10/16/02). S/U. Arxiu Històric de la Ciutat de Barcelona.

OPP.02:273; PP.02:143; AB.00*:23; JR.91:248p





Visage d'homme de trois quarts. Barcelona.
October/1902. Conté crayon on an envelope. 13,9 x 10,8
cm. Sotheby's. #614, L16005, 02/05/16. Formerly Marina
Picasso Collection.

OPP.02:296; PP.02:144; Z.VI:433

Scènes érotiques. Paris. [Fourth-
Quarter]/1902 [1905]. Pen & black ink
[sepia] on paper. [20 x 31,1] 20,2 x 31,2
cm. Musée Picasso, Paris. Dation 1979.

OPP.02:191; MPP:452; PP.02:202;
BL.91*:79; DW.05:15p; EC.07:54p;
JC.01a*:23bis; JG.84*:159; MA.17b:60p





Feuille d'études: Femme dans un intérieur, têtes de femme, couple. Paris. [Fourth-Quarter]/1902. Black ink & ochre ink on paper. 15,4 x 23,4 cm. Museu Picasso, Barcelona.

OPP.02:224; CS.00:130p

Tête de femme. Paris (Hôtel du Maroc). October/1902~January/1903. Charcoal & crayon. [40 x 28,5] 37,5 x 28 cm. Marina Picasso Collection. (Inv 003491). Courtesy Galerie Jan Krugier, Geneva.

OPP.02:126; P.I:824; PP.02:228; Z.XXI:404; GS.85*:8; JR.91:251p; PD.02*:3





Autoportrait le bras levé. Paris (Hôtel du Maroc).
October/1902~January/1903. Pencil on paper. [19,5 x 10] 18,2 x 9,4 cm.
Sotheby's. #325, L20004, 02/05/20. Formerly Sotheby's. #563, L16005,
02/05/16; Marina Picasso Collection. (Inv 0745).

OPP.02:167; P.I:811; PP.02:192; Z.VI:507; FB.13*:n/a; GS.85*:7;
SG.96:2.11; TK.86*:D-10; WR.96:128p

Frontispice du journal El Liberal (Évocation des Fêtes Barcelonaises de La Merced). Barcelona. 5-October/1902. Print on paper (Published in El Liberal, 10/05/02). S/U. Museu Picasso, Barcelona.

OPP.02:133; P.I:772; PP.02:142; Z.XXI:374; AB.00*:21;
BA.24a*:24p; BF.21:93p; BS.19:82p; CR.07:179p;
JP.66:73; JP.99:25p; JR.91:247p; MM.97:94p;
PA.19h*:86; TO.95a:105p; TO.96a:105p; WS.95a*:15





Portrait (Jane Thylda). Paris. [Late-October]/1902. Lead pencil. 32 x 23 cm. Private collection. Formerly Masoliver Collection, Barcelona.

OPP.02:137; P.I:776; PP.02:147; Z.VI:444; AC.46:138

Portrait de Jane Thylda. Paris. [Late-October]/1902. Graphite pencil on paper. 56 x 21 cm. Private collection.

OPP.02:138; P.I:777; PP.02:146; Z.XXI:243





Portrait de Anna Thibault. Paris. [Late-October]/1902. Conté pencil on paper. S/U. Private collection.

OPP.02:140; P.I:779; PP.02:148; Z.VI:370; JR.91:252p

Portrait de Jane Thylda. Paris. [Late-October]/1902. Pencil on paper. 49 x 32 cm. Private collection.

OPP.02:260; RD.11*:12





Portrait de Jane Thylda. Paris. [Late-October]/1902. Black pencil. 24 x 30 cm. Fondation Bemberg Museum, Toulouse. (Inv 2110).

OPP.02:307

Femme aux bras levés. Paris. [Late-October ~ December]/1902. Charcoal on buff paper. [30,5 x 17,8] 31 x 17,5 cm. Christie's. #111, 11/11/87.

OPP.02:025; PP.02:248





L'étreinte. Paris. [Late-October ~ December]/1902. Watercolor, brush & black ink on paper laid down on board. 12 x 19,1 cm. Christie's. #109, 1076, 05/08/02.

OPP.02:029; PP.02:203

Profil de femme. Paris. [Late-October ~ December]/1902 [~1903]. Pencil on paper mounted on board. 17,5 x 22,5 cm. Christie's. #108, 1076, 05/08/02. Formerly Christie's. #503, 9036, 11/19/98; Maurice and Jacqueline Bresnu (Nounours) Collection.

OPP.02:030; PP.0203:013; GD.96:23p





Tête de femme. Paris. [Late-October ~ December]/1902. Pen & ink on paper. 31,5 x 21 cm. Christie's. #122, 1148, 11/07/02. Formerly Thomas Amman Fine Art, Zurich.

OPP.02:034; PP.02:226; GT.81*:7a; KB.01*:11; RD.00*:20; RH.36:448; ST.26*:514

Autoportrait au bras levé. Paris. [Late-October ~ December]/1902 [~1903]. Pencil on paper. 27,3 x 20,3 cm. Private collection, Europe. Formerly Sotheby's. #14, PF1206, 05/30/12; Sotheby's. #126, N07839, 11/06/02; Sotheby's. #3, 12/07/99; Sotheby's. #401, 6489, 11/04/93; Marina Picasso Collection.

OPP.02:035; P.I.:810; PP.02:191; Z.VI:456; BA.17:180p; GE.88b*:18; JG.13:41p; JG.84*:165; JR.91:261p; LO.88a*:18; MB.84*:165; ME.82a*:4; MP.83*:16; NM.95:81p; PB.21:67; WR.96:128p; YP.13*:37; ZU.88*:n/a



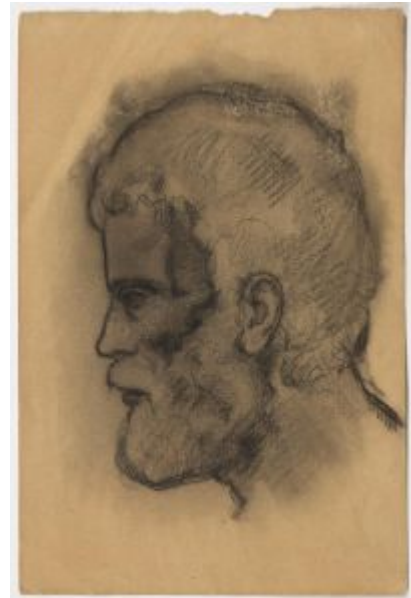


Homme nu portant un sac. Paris. [Late-October ~ December]/1902. Pen & sepia wash on yellowish paper. 26 x 20 cm. Museu Picasso, Barcelona. Donation 1970.

OPP.02:045; C:943; MPB:110.503; PP.02:237; TK.02*:n/a; TO.97*:203

Homme barbu. Paris. [Late-October ~ December]/1902 [January/1903]. Charcoal on yellowish paper. 24 x 15,9 cm. Museu Picasso, Barcelona. Donation 1970.

OPP.02:047; C:942; MPB:110.490; P.I:857; PP.02:176; PJ.02*:128; TK.02*:n/a; TO.97*:205





Études de chiromancie sur Picasso. Paris. [Late-October ~ December]/1902 [~1903]. Graphite & black pencil on paper (drawing); pen & sepia ink on paper (text). 19 x 29,9 [29,2] cm. Museu Picasso, Barcelona. Donation 1970.

OPP.02:052; MPB:110.373; P.I:831; P.IV:754; PP.02:190; BA.12b*:139p; HS.94*:12; PA.19h*:122; PA.21g*:43p; PB.21:114; TK.02*:n/a; TO.97*:211

Études de chiromancie de Picasso par Max Jacob. Paris. [Late-October ~ December]/1902 [~1903]. Pencil on paper (drawing); pen & sepia ink on paper (text). 29 x 18,9 [18,5] cm. Museu Picasso, Barcelona. Donation 1970.

OPP.02:053; MPB:110.372; P.I:832; PP.02:189; BA.12b*:138p; GM.11:86p; HS.94*:13; JG.13:73p; JR.91:267p; MF.01:70p; PA.19h*:1; TK.02*:n/a; TO.97*:212; WR.12b:154





Autoportrait avec chien. Paris. [Late-October ~ December]/1902. Pen & sepia ink on laid paper. 11,5 x 13 cm. Museu Picasso, Barcelona. Donation 1970.

OPP.02:063; C:212; MPB:110.443; PP.02:193; CP.95:97p; LO.94*:n/a; TK.02*:n/a; TO.97*:239; WR.80:46p; WR.80:46p; YP.13*:n/a

Autoportrait à la canne. Paris [Barcelona]. [Late-October ~ December]/1902 [1902~1903]. Pen & sepia ink on white paper. 32,5 x 19 cm. Museu Picasso, Barcelona. Donation 1970.

OPP.02:064; C:932; MPB:110.901; P.I:938; PP.02:194; PB.21:53; PB.81*:8A.4; TK.02*:n/a; TO.97*:240; WR.80:46p; YP.13*:17





Le boxeur. [Paris]. [Late-October ~ December]/1902 [~1904]. Pen, ink & watercolor on paper. 15,6 x 11,1 cm. Sotheby's. #202, N07936, 11/06/03.

OPP.02:066; PP.02:253

Portrait de Max Jacob et étude de chiromancie de la main de l'artiste. Paris. [Late-October ~ December]/1902. Graphite & pen & sepia ink on paper. 29 x 18,9 cm. Museu Picasso, Barcelona.

OPP.02:396; PA.21g*:43p





Portrait de Mlle Bresina assise dans un fauteuil. Paris. [Late-October]/1902 [January/1903]. Conté pencil on paper. 32,5 x 25 cm. Museu Picasso, Barcelona. Donation 1970.

OPP.02:139; C:909; MPB:110.544; P.I:778; PP.03:010; JR.91:252p; TK.02*:n/a; TO.97*:206b

Femmes et enfant (Intimité). Paris. [End-October]/1902. Pastel on paper. 37 x 46 cm. Private collection, Paris.

OPP.02:096; DB.VIII:3; LD:48; P.I:793; PP.02:252; Z.I:180; AC.46:151; JC.59:15p; JR.91:254p; MJ.55*:6; PA.04a*:37; PA.14a*:n/a





Nu de dos. Paris. [Late-Fall]/1902. India ink. 29 x 17 cm. The Picasso Estate.

OPP.02:160; P.I:803; PP.0203:036; Z.VI:547

Personnage excentrique. Paris~Barcelona. [Late-Fall]/1902. Charcoal. 44 x 32,5 cm. Private collection.

OPP.02:165; P.I:943; PP.0203:008; Z.VI:402; AB.97b*:26





Personnage excentrique souriant. Paris~Barcelona. [Late-Fall]/1902.
Conté pencil on paper. 30 x 15 cm. Private collection.

OPP.02:166; P.I:944; PP.0203:005; Z.I:135

Autoportrait: couple faisant l'amour (La douleur).
Paris. [End-November/1902] [~1903]. Oil on canvas.
70,2 x 55,6 cm. The Metropolitan Museum of Art, NYC.
(Inv 1984.433.22). Bequest of Scofield Thayer, 1982.

OPP.02:200; PP.0203:099; GT.10*:20; JC.01a*:40;
JP.11b:29p; JR.01:18p; JR.91:258p; LO.07a*:n/a;
NM.95:74p; PA.98b*:n/a; PB.21:73





Femme nue bras levés et pieds (Études). Barcelona~Paris. December/1902. Pen, sepia, black ink, graphite frottage & black pencil on yellowish paper. 26 x 20 cm. Museu Picasso, Barcelona. Donation 1970.

OPP.02:039; C:948; MPB:110.504; P.I:774; PP.02:242; TO.97*:196

Personnage implorant. Paris. December/1902. Pen & sepia ink on straw-colored laid paper. 17,6 x 11,3 cm. Museu Picasso, Barcelona. Donation 1970.

OPP.02:040; C:950; MPB:110.463; PP.02:245; BF.21*:T220p; TO.97*:197





Tête de garçon. Paris. December/1902. [Conté crayon & charcoal] Black pencil on buff paper. 31,2 x 23,5 cm. Museu Picasso, Barcelona. Donation 1970.

OPP.02:041; C:210; MPB:110.529; P.I:809; PP.02:199;
CK.10*:95; MM.11a*:65; PJ.02*:126; PP.20*:39; TK.02*:n/a;
TO.97*:198



Tête regardant fixement. Paris. December/1902.
[Conté crayon] Black pencil on yellowish paper. 31,2 x
24,3 cm. Museu Picasso, Barcelona. Donation 1970.

OPP.02:042; C:918; MPB:110.530; P.I:814;
PP.02:198; Z.XXI:351; AP.97:43p; CK.10*:96;
DK.99:303p; GD.77:19p; MM.11a*:64; PA.19h*:115;
PJ.02*:127; TK.02*:n/a; TL.89*:11; TO.97*:199;
UP.00:102; VC.89*:n/a



Homme transportant un sac. Paris. December/1902. Graphite pencil on yellowish paper. 31,2 x 23,5 cm. Museu Picasso, Barcelona. Donation 1970.

OPP.02:044; C:229; MPB:110.531; P.I:909; PP.02:239; BF.21*:205p; MM.11a*:68; PJ.02*:129; TK.02*:n/a; TO.97*:202

Buste de femme. Paris. December/1902. Pen, wash, sepia & black ink on yellowish paper. 14,8 x 18,3 cm. Museu Picasso, Barcelona. Donation 1970.

OPP.02:051; C:231; MPB:110.469; PP.02:160; AU.89*:4; TK.02*:n/a; TO.97*:210





Désespérance. Paris. [Late-October~]
December/1902. Pastel on paper. 23,5 x 31 cm.
Private collection.

OPP.02:068; P.I:801; PP.02:249; Z.XXI:362;
AP.89:34p; BA.17:62p; BL.91:28p; JR.91:255p;
MA.22b*:18; MF.01:74p; NM.06:51p; PJ.02*:125;
WR.12b:71

Deux études de femme. Paris. December/1902. Pen
on paper. 11,7 x 14,7 cm. Museu Picasso, Barcelona.
Donation 1970.

OPP.02:091; MPB:110.444; PP.02:231; BA.03a*:49





Portrait d'homme. Paris. December/1902. Charcoal on paper. 32 x 24,4 [24,5] cm. Musée Picasso, Paris. Dation 1979.

OPP.02:094; MPP:465; PP.02:229; Z.XXI:405; BL.91*:54; CK.04*:6; JG.84*:170; PA.19h*:114; PA.79a*:387; PD.06*:206p

Tête de vieil homme. Paris. December/1902 [January/1903]. Pen & ink on paper. 28,5 x 18 cm. Private collection.

OPP.02:142; P.I:859; PP.02:174; Z.VI:431



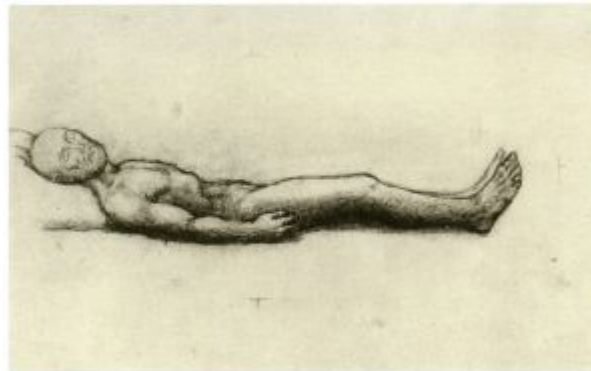


Femme implorant le ciel. Paris. December/1902
[January/1903]. Pen & India ink on beige paper. 26,1 x 18,7 cm.
Musée Picasso, Paris. Dation 1979.

OPP.02:162; MPP:458; P.I:805; PP.02:247; Z.XXI:360;
AB.12*:90p; BA.17*:118p; BL.91*:65; CK.04*:7; HS.94*:15;
JR.91:255p; PA.19h*:99; PP.19:297p; RK.01*:n/a; TO.97:247p;
WR.12b:70

Le mort (Étude). Paris.
[December]/1902. Soft lead pencil. 17 x 31
cm. The Picasso Estate.

OPP.02:163; P.I:808; PP.02:223;
Z.XXI:361; AP.89:34p; BA.17:64p;
JR.91:255p; NM.95:75p





Trois personnages. Paris. December/1902. Charcoal & pencil with scraping & rubbing. 31 x 24 cm. Musée Picasso, Paris.

OPP.02:178; MPP:454.v; PP.02:168; Z.VI:423; BL.91*:53; TO.97:245p

Mère et enfant. Paris. December/1902 [1903]. Pen & black ink on paper. 25,9 x 20,3 cm. Musée Picasso, Paris. Dation 1979.

OPP.02:179; MPP:456; PP.02:246; Z.VI:561; BL.91*:66; DK.99*:489; MA.22b*:16; PA.19h:100; WS.95a*:25





Tête de femme au chignon. Paris. December/1902. Pen, black ink & brown ink on paper. 23 x 18 cm. Musée Picasso, Paris.

OPP.02:187; MPP:469; PP.02:172; Z.VI:428; BL.91*:55

Femme nue implorant le ciel. Paris. December/1902. Pen, brown ink and tinted wash with scraping on paper. 31 x 23,2 cm. Musée Picasso, Paris. Dation 1979.

OPP.02:190; MPP:457; PP.02:243; Z.VI:412;
BA.17*:119p; BL.91*:64; BS.19:87p; DK.99*:490;
JG.84*:164; PA.19h*:98; PA.21f*:101; RK.01*:n/a





Femme et enfant. Paris. December/1902. Conté pencil on paper. 17,4 x 11,3 cm. Museu Picasso, Barcelona. Donation 1970.

OPP.02:209; C:940; MPB:110.462; PP.02:151; MA.22b*:11;
VC.10*:n/a

Donna assise, endormie. Paris. December/1902. Pen & sepia ink on paper. 18,4 x 13,7 cm. Museu Picasso, Barcelona. Donation 1970.

OPP.02:212; C:260; MPB:110.464; PP.02:232





Foule. Paris. [December]/1902. Pen on paper. 20,3 x 28 cm. Museu Picasso, Barcelona. Donation 1970.

OPP.02:219; MPB:110.506; PP.02:238

Croquis. Paris. December/1902. Sanguine on paper. 24 x 15,9 cm. Museu Picasso, Barcelona. Donation 1970.

OPP.02:222; MPB:110.490r; PP.02:177





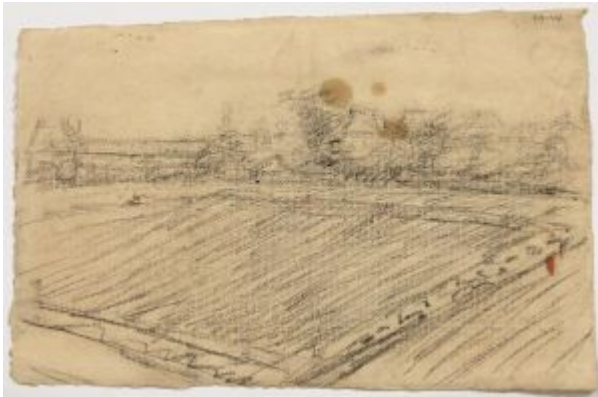
'Para tener un niño en los brazos'. Barcelona.
December/1902. Pen & ink on paper. 18,3 x 23
cm. Museu Picasso, Barcelona. Donation 1970.

OPP.02:226; MPB:110.501; PP.02:236

Tête de femme aux cheveux courts. Barcelona.
December/1902. Conté pencil on paper. 12,2 x 8 cm. Museu
Picasso, Barcelona. Donation 1970.

OPP.02:229; C:232; MPB:110.437; PP.02:230





Croquis: champ labouré. Barcelona.
December/1902. Conté pencil on paper. 16 x 24,5
cm. Museu Picasso, Barcelona. Donation 1970.

OPP.02:231; MPB:110.491r; PP.02:234

Femme implorant et enfants. Paris~Barcelona.
[December]/1902. Pen & sepia ink on paper. 26 x 20,5
cm. Museu Picasso, Barcelona. Donation 1970.

OPP.02:239; C:945; MPB:110.519; PP.02:244;
BA.11*:n/a





Les adieux aux pêcheurs. Barcelona.
December/1902. Pen & ink on paper. 12,6 x 14,5
cm. Museu Picasso, Barcelona. Donation 1970.

OPP.02:241; C:947; MPB:110.447; PP.0203:096;
PB.81*:8A.9; TO.97:246p

Les adieux aux pêcheurs. Barcelona.
[1901~1902] December/1902. Pen & ink
on paper. 11,7 x 14,7 cm. Museu Picasso,
Barcelona. Donation 1970.

OPP.02:242; C:225; MPB:110.444r;
PP.0203:094; TO.97:246p





Étude de figure. Barcelona. December/1902. Pen, ink & ink wash on paper. 23,1 x 18,5 cm. Museu Picasso, Barcelona. Donation 1970.

OPP.02:243; C:256; MPB:110.498; PP.02:235

Groupe de personnes. Barcelona. December/1902. Conté pencil, pen & ink on paper. 24,5 x 16 cm. Museu Picasso, Barcelona. Donation 1970.

OPP.02:245; C:938; MPB:110.491; PP.02:233; TO.97:244p





Femme nue invoquant le ciel. Paris~Barcelona. [December]/1902. Pen & brown ink. [42,3 x 22,6] [41,9 x 22,4] 42 x 22,5 cm. Sotheby's. #N.A, ZH2103, 06/08/21. Formerly Galerie Kornfeld und Cie, Bern. #119, 06/15/12; Marina Picasso Collection. (Inv 00357).

OPP.02:258; PP.0203:002; Z.VI:410; MB.84*:n/a; MP.81*:22; VE.81*:33

Tête levée. Paris. December/1902. Charcoal on paper. 31 x 23,5 cm. Marina Picasso Collection. (Inv 00347).
Courtesy Galerie Jan Krugier, Geneva.

OPP.02:287; PP.02:195; Z.VI:429; JR.91:250p;
MP.81*:26





Couple. Paris. December/1902. Pen & ink on paper. 26 x 16,2 cm. Private collection.

OPP.02:356; PP.02:184; Z.VI:448

Couple. Paris. December/1902. Pen & ink on paper. 15,4 x 8,4 cm. Private collection.

OPP.02:362; PP.02:186; Z.VI:457





Tête de personnage masculin effacée. Paris. December/1902.
Conté pencil on paper. 12,2 x 8 cm. Museu Picasso, Barcelona.
Donation 1970.

OPP.02:376; MPB:110.437r

Bateau et personnages sur le rivage.
Paris. [December]/1902 [January/1903].
Pen & India ink on paper. 23,5 x 31,2
[31,5] cm. Musée Picasso, Paris. Dation
1979.

OPP.02:129; MPP:449; PI:826;
PP.03:024; Z.XXI:354; BF.21*:200p;
BL.91*:68; JR.91:256p





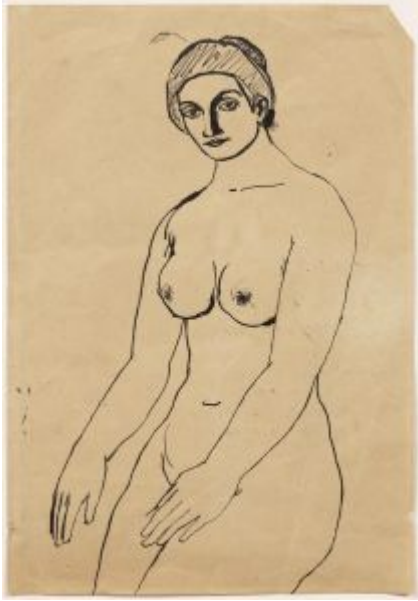
L'âge d'or. Paris. 2-December/1902. Pen, sepia ink & wash on paper. [26,1] 26 x 40 cm. Museu Picasso, Barcelona. Donation 1970.

OPP.02:046; C:230; MPB:110.546; PP.02:240; JR.09:250p; JR.91:256p; LU.93:551p; MM.11a*:66; PL.89:39; TK.00*:n/a; TK.02*:n/a; TO.94*:163; TO.97*:204

Groupe familial. Paris. December/1902. Black pencil on paper. 14,5 x 11,6 cm. Museu Picasso, Barcelona. Donation 1970.

OPP.02:374; MPB:115.004





Nu féminin. Barcelona. End/1902. Pen & ink on paper. 22,5 x 15,5 cm. Museu Picasso, Barcelona. Donation 1970.

OPP.02:248; C:272; MPB:110.485; PP.02:251; ST.88*:n/a

Jeune femme regardant la pluie. Paris. [End]/1902. Charcoal on paper. 8,8 x 12 cm. Museu Picasso, Barcelona.

OPP.02:399; MPB:110.436; PP.02:250





Barbu, profil gauche. Paris~Barcelona.
End/1902~Early/1903. Conté crayon on paper. 31,5 x 24,5
cm. Marina Picasso Collection. (Inv 00351). Courtesy Galerie
Jan Krugier, Geneva.

OPP.02:292; PP.02:175; Z.VI:432; MP.81*:28

Mère et enfant. Paris. [Winter]/1902. [Conté pencil]
Black crayon & pencil on paper. [26 x 19,8] 25,7 x 19,5
cm. Sotheby's. #246, L10005, 02/04/10. Formerly
Sotheby's. #128, 11/16/89.

OPP.02:157; P.I:799; PP.02:169; Z.VI:425; AC.46:139;
AC.50:133





Études. Paris. [Winter]/1902. Pen & ink on paper.
S/U. Private collection.

OPP.02:326; PP.02:149; Z.XXI:379

La soupe. Paris. [Winter/1902~1903].
High-tech scan of oil on canvas [Underlayer
of *La soupe*]. 38,4 x 46 cm. Art Gallery of
Ontario, Toronto. (Inv 83/316). Gift of
Margaret Dunlap Crang, 1983.

OPP.02:308





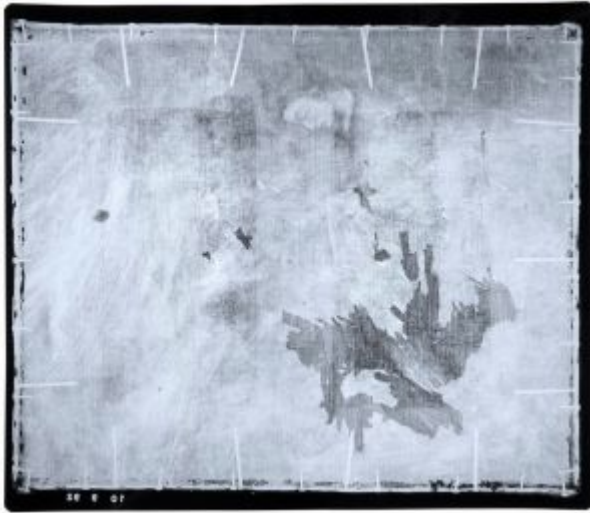
Femme assise. Paris~Barcelona. [Winter]/1902 [1903].
Pen & ink on paper. 23 x 17 cm. Private collection.

OPP.02:358; PP.03:073; Z.VI:451

La soupe. Paris. [Winter/1902~1903]. Oil
on canvas [Overlayer of *La soupe*, *La
soupe*; *La soupe*; *La soupe*; *La soupe*].
38,4 x 46 cm. Art Gallery of Ontario,
Toronto. (Inv 83/316). Gift of Margaret
Dunlap Crang, 1983.

OPP.02:002; DB.VII:11; LD:34; P.I:848;
PP.02:222; Z.I:131; AC.46:128;
BF.21*:223p; BF.21:87p; BS.19*:99p;
EB.70:10p; EV.15:221p; GC.96:68p;
HK.65:49p; JB.92:41p; JL.51:8;
JP.11b:29p; JR.91:256p; LA.48*:n/a;
LG.92:22; MM.97*:86; MR.21:3.8;
NY.12a*:228; NY.47a*:13; PA.19h*:119;
SC.11*:228; TH.75:10; TK.92:4;
TO.64*:14; TO.97:246p; UP.00:113;
WS.94:16p; WS.95a*:18





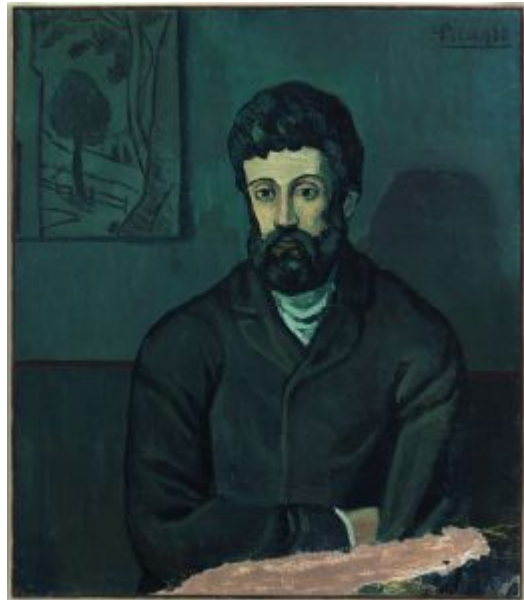
La soupe. Paris. [Winter/1902~1903]. X-ray of oil on canvas [Underlayer of *La soupe*]. 38,4 x 46 cm. Art Gallery of Ontario, Toronto. (Inv 83/316). Gift of Margaret Dunlap Crang, 1983.

OPP.02:017

Homme en bleu (Francisco Iturrino).

Paris~Barcelona. Winter/1902~1903. Oil on canvas. 93 x 78 cm. Musée Picasso, Paris. Dation 1979.

OPP.02:022; DB.VIII:1; LD:46; MPP:5; P.I:782; PP.0203:006; Z.I:142; AB.97b*:25; AC.46:140; BF.21*:227p; BS.19*:102p; DC.91:43p; DK.99*:494; GP.32*:12; JC.40:45p; JR.91:235p; JR.91:235p; KZ.32*:16; MA.08a*:n/a; MA.17b*:19; ME.82a*:2; MG.04b*:17; MN.80*:n/a; MP.85:5; ND.01*:1; PA.19h*:118; PA.79a*:6; SD.05*:5; SP.04*:n/a; WW.73:49p; WW.91:89p





La soupe (Étude). Paris. [Winter]/1902~1903. Pencil on paper. 45,7 x 61,2 cm. Christie's. #119, 1724, 11/09/06.

OPP.02:082; PP.02:216

Femme de profil. Paris. [Winter]/1902~1903. Pencil on paper. [17,4 x 11,4] 17,2 x 11,3 cm. Christie's. #176, 17659, 11/12/19. Formerly Christie's. #120, 2438, 05/05/11; Christie's. #0349, 5491, 03/22/07.

OPP.02:083; PP.0203:012; Z.VI:437





La mendiante (Études). Paris. [Winter]/1902. Pen & ink on paper. 30 x 25,5 cm. Private collection. Formerly Sotheby's. #12, PF8008, 07/02/08. Sotheby's. #340, N08315, 05/09/07; Junyent Collection, Barcelona.

OPP.02:084; P.I:816; PP.02:164; Z.VI:403; BF.21*:212p; BF.21:89p; JR.62*:8.4

Couple. [Paris]. [Winter]/1902. Violet ink on envelope [Oic]. 11 x 15 cm. Private collection.

OPP.02:090; PP.02:166; BA.03a*:46





Tête de vieille femme et personnages. Paris~Barcelona.
[Winter]/1902 [1903~1904]. Pencil & India ink & pencil on paper.
[54,5 x 38,3] 55 x 38,5 cm. Sotheby's. #31, N10944, 04/14/22.
Formerly Marina Picasso Collection. (Inv 0509)..

OPP.02:092; PP.0304:012; Z.XXI:364; BA.03a*:48; MP.81*:27

Maternité. Paris. [Winter]/1902. [Conté pencil] charcoal & white chalk on cream paper. 23,8 x 15,7 cm. Christie's.
#0510, 7564, 02/05/08. Formerly G. Mattioli Collection.

OPP.02:093; P.I.:796; PP.02:150; Z.VI:404; FL.53*:n/a;
MI.33*:n/a





Étude d'homme nu, les bras levés. Paris. Winter/1902~1903. Graphite on laid paper. [46 x 24] 45,8 x 23,8 cm. Musée des Beaux-Arts, Grenoble. (Inv MG 2751). Achat à la Galerie Zack en 1934.

OPP.02:104; DB.DVIII:1; PP.0203:040; Z.XXI:358; KZ.46a*:188; PA.35d*:337; PA.35d*:n/a

Tête de femme de profil. Paris~Barcelona. [Winter]/1902~1903. Conté crayon. 16,5 x 11 cm. The Detroit Institute of Arts. (Inv 65.301). Bequest of John S. Newberry.

OPP.02:109; DB.DVII:11; PP.0203:085; Z.XXII:39; BO.62*:n/a; CK.47*:n/a; CM.48a*:n/a; CM.58a*:67; DC.91:59p; DT.47*:n/a; DT.49*:36; NY.45a*:5; PT.49*:2; SF.48c*:35; TO.49*:35





Le poète Cornuti (L'Absithe). Paris. Winter/1902~1903.
Watercolor. 31 x 23,5 cm. Drouot. #152, 12/21/07.

OPP.02:110; DB.VIII:2; LD:47; P.I:781; PP.0203:007;
Z.I:182; AC.46:154; HS.94*:14; JR.91:259p; PA.14a*:n/a;
PA.64b*:239

Étude. Paris~Barcelona. [Winter]/1902 [1903]. Pen & ink on
paper. 15,5 x 9 cm. Private collection.

OPP.02:111; PP.0203:031; Z.VI:509





Mère et enfant. Paris. [Winter]/1902~1903. Ink on paper. 21 x 21,7 cm. Private collection.

OPP.02:119; P.I:830; PP.0203:035; Z.VI:538

Famille de l'aveugle (Étude) (Femme et enfants). Paris~Barcelona. Winter/1902~1903 [Early]/1903. Conté pencil on paper. 30,8 x 23 cm. Museu Picasso, Barcelona. Donation 1970.

OPP.02:122; C:939; MPB:110.528; P.I:742; PP.03:078; TO.97*:232





Tête de femme. Paris~Barcelona. [Winter]/1902~1903. Pen & India ink on beige paper. 23,8 x 16,3 cm. Musée Picasso, Paris.

OPP.02:123; MPP:466; PP.0203:019; Z.VI:466; BL.91*:59;
MA.04b*:n/a

Tête de femme. Paris. [Winter]/1902. Sepia ink on paper. 15,5 x 12,5 cm. Jean de Faramond Collection, Ascain.

OPP.02:135; P.I:825; PP.02:227; Z.XXI:403;
NY.21g*:3



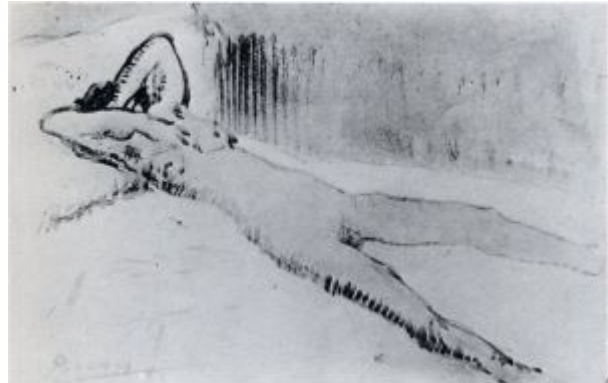


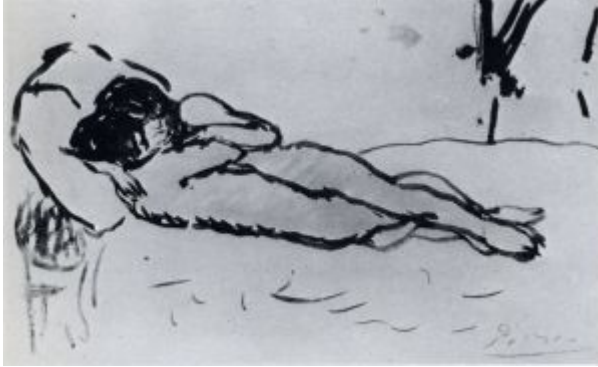
Au quartier latin: le conférencier. Paris. [Winter]/1902~1903 [Fall/1903]. Pen & brush & black ink on paper laid down on card. [27 x 19] 26,6 x 18,8 cm. Christie's. #575, 22057, 11/11/2023.

OPP.02:141; P.I:780; PP.03:225; Z.XXII:23; GM.11*:n/a; RH.95b*:54p

Nu couché. Paris. [Winter]/1902. Watercolor on paper [OiC]. 12 x 19 cm. Private collection.

OPP.02:143; P.I:783; PP.02:200; Z.XXI:325





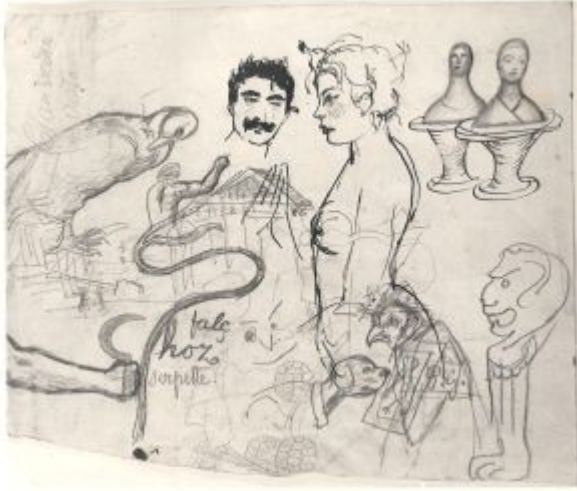
L'étéinte I. Paris. [1901] [Winter]/1902.
Watercolor on paper [OiC]. 12 x 19 cm. Private
collection.

OPP.02:144; P.I:784; PP.02:207; Z.XXI:328;
CR.84:113p

L' étéinte III. Paris. [1901]
[Winter]/1902. Watercolor on paper [OiC].
12 x 19 cm. Sotheby's. #196, 11/28/95.

OPP.02:145; P.I:786; PP.02:209;
Z.XXI:330





Croquis divers. Paris~Barcelona.
Winter/1902~1903 [1904~1905]. Pen, ink & lead
pencil on paper. 23 x 27,8 cm. Museu Picasso,
Barcelona. Donation 1970.

OPP.02:146; MPB:110.515; PP.0405:029

L'étreinte IV. Paris. [1901]
[Winter]/1902. Blue watercolor on paper
[OïC]. 12 x 19 cm. Helen Serger Collection,
NY.

OPP.02:147; DB.DXIII:5; LD:208;
P.I:789; PP.02:210; Z.XXI:331





L' étreinte V. Paris. [1901] [Winter]/1902.
Watercolor on paper [OIC]. 12 x 19 cm. Private
collection.

OPP.02:148; P.I:790; PP.02:208; Z.XXI:329

L' étreinte VI. Paris. [1901]
[Winter]/1902. Watercolor on paper [Oic].
12 x 19 cm. Private collection.

OPP.02:149; P.I:791; PP.02:206;
Z.XXI:327





L' étreinte VII. Paris. [1901] [Winter]/1902. Watercolor on paper [OIC]. 12 x 19 cm. Private collection.

OPP.02:150; P.I:792; PP.02:204; Z.XXI:324; NM.95:73p

Nu frissonnant de froid. Paris~Barcelona. [Winter]/1902. Pen & ink on paper. 16,2 x 7,7 cm. Museu Picasso, Barcelona. Donation 1970.

OPP.02:151; C:926; MPB:110.448; P.I:788; PP.02:212; PB.81*:4A.6





Femme nue dans la peine. Paris~Barcelona. [Winter]/1902~1903 [Fall/1903]. Lead pencil on paper. 16,9 x 26,5 cm. Museu Picasso, Barcelona. Donation 1970.

OPP.02:152; C:237; MPB:110.502; P.II:16; PP.03:251; PA.07a*:95p; WR.12b:149

Mère nue et enfant. Paris. [Winter]/1902. Conté crayon on paper. 24,5 x 18 cm. Private collection.

OPP.02:153; P.I:794; PP.02:162; Z.VI:416





Mère et enfant dormant. Paris. [Winter]/1902 [~1903].
Charcoal on paper. [31,6 x 22,7] 32 x 23 cm. Private collection.

OPP.02:154; P.I:795; PP.02:163; Z.VI:583; JG.84*:167;
MA.22b*:17

Femme assise se penchant en avant. Paris.
[Winter]/1902~1903. Ink & crayon on paper. 22,3 x 14 cm.
Private collection.

OPP.02:155; P.I:797; PP.02:153; Z.VI:417





Nu debout. Paris. [Winter]/1902~1903. Conté crayon on paper. 25 x 22,3 cm. Private collection.

OPP.02:156; P.I:798; PP.0203:016; Z.VI:458

La toilette. Paris. [Winter]/1902~1903. India ink & pastel on paper. 31,1 x 17 cm. Private collection.

OPP.02:158; P.I:800; PP.03:014; Z.VI:549; RL.92*:1





Homme les bras levés. Paris. [Winter]/1902. India ink on paper. 39 x 22,5 cm. The Picasso Estate.

OPP.02:159; P.I:802; PP.02:241; Z.XXI:359; AP.89:34p

Pauvre couple. Paris. [Winter]/1902. Graphite pencil on paper. 27,5 x 22 cm. Private collection.

OPP.02:161; P.I:804; PP.02:179; Z.VI:440; JG.13*:15





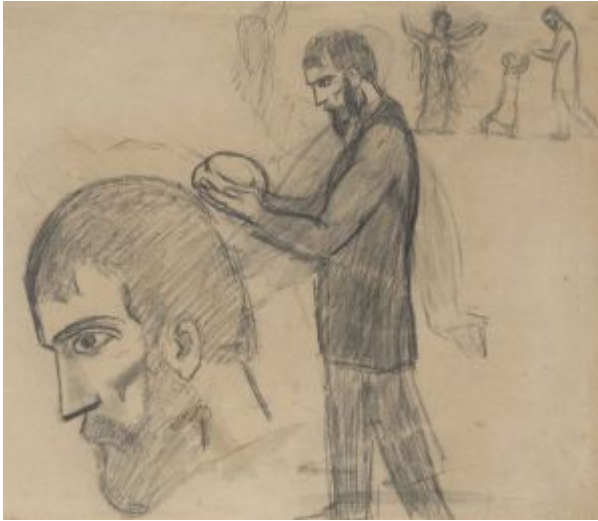
Tête de femme. Paris. [Winter]/1902. Conté crayon on paper. 9 x 12,5 cm. Joan Gaspar i Paronella Collection, Barcelona.

OPP.02:168; P.I:812; PP.02:188; Z.VI:463

La soupe: femme portant un bol (Étude). Paris. Winter/1902. India ink. 26 x 16,2 cm. The Picasso Estate.

OPP.02:170; P.I:817; PP.02:214; Z.VI:409; BF.21*:215p





La soupe (Étude). Paris. [Winter]/1902. Graphite on paper. [29,7 x 23,8] [24 x 30,5] 24,2 x 30,5 cm. Private collection. Formerly Christie's. #89, 3585, 03/26/14. Sotheby's. #109A, 05/17/90.

OPP.02:171; LD:34A; P.I:819; PP.02:218;
Z.I:192; BF.21*:211p

Deux garçons luttant. Paris. [Winter]/1902. Fost pencil on paper laid down on board. 38 x 47,5 cm. Private collection. Formerly Christie's. #105, 12/03/91; Christie's. #130, 06/26/90.

OPP.02:172; P.I:827; PP.03:022;
Z.XXI:352





La soupe (Étude). Paris. [Winter]/1902. Pen & ink. 27,5 x 20 cm. The Picasso Estate.

OPP.02:174; P.I:820; PP.02:215; Z.VI:504; BF.21*:217p; BF.21:88p

La soupe (Étude). Paris. [Winter]/1902. Bron ink on wove paper glued fully onto wove paper. 26 x 24 cm. Fundación Almine & Bernard Ruiz-Picasso para el Arte.

OPP.02:175; LD:34D; P.I:822; PP.02:221; Z.VI:420; BF.21*:214p; BF.21:90p





La soupe (Étude). Paris. [Winter]/1902. Pen & ink on paper. 26 x 24 cm. Marina Picasso Collection. (Inv 00367). Courtesy Galerie Jan Krugier, Geneva.

OPP.02:176; LD:34C; P.I:821; PP.02:220; Z.VI:418; BF.21:90p; MP.81*:30

Portrait d'homme barbu. Paris~Barcelona. Winter/1902~1093. Pen & India ink on paper. 16,8 x 13,2 cm. Musée Picasso, Paris. Dation 1979.

OPP.02:181; MPP:453; PP.0203:017; Z.VI:464; BF.21*:226p; BL.91*:58; DK.99*:493; RK.01*:n/a





Femmes avec les chaussettes dépouillées.
Paris~Barcelona. [Winter]/1902. India ink on
paper. 20 x 31 cm. Private collection, Paris.

OPP.02:182; PP.02:201; JC.01a*:23

Scène érotique. Paris~Barcelona.
[Winter]/1902. Ink & watercolor on paper.
32 x 44 cm. Private collection, Paris.

OPP.02:184; PP.02:211; JC.01a*:24





Environnement vaginal. Paris~Barcelona. [Winter]/1902~1903.
Ink & watercolor on paper. 23 x 16 cm. Private collection.

OPP.02:185; PP.0203:068; JC.01a*:33a

Homme nu les bras levés. Paris. Winter/1902~1903.
Pen, brown ink & ink wash over pencil tracings on paper.
55,8 x 38,9 cm. Musée Picasso, Paris. Dation 1979.

OPP.02:188; MPP:464; PP.0203:033; Z.VI:515;
BL.91*:63; PA.19h*:97; PA.79a*:389





Feuille d'études: le vieux juif, pommeau de canne et silhouettes diverses. Paris~Barcelona. [Winter]/1902~1903. Pen & brown ink on paper. 38 x 46 cm. Musée Picasso, Paris. Dation 1979.

OPP.02:192; MPP:450; P.I:934; PP.03:101; Z.XXI:370; BL.91*:75; PA.19h*:157

Homme âgé. Paris~Barcelona. [Winter]/1902~1903. Graphite pencil on paper. 17,5 x 11,4 cm. Sotheby's. #75, N08850, 05/02/12.

OPP.02:199; PP.0203:024; Z.VI:475; BO.00*:7; DC.91:49p; LO.93a*:31





Tête de femme de profil et quatre études.

Paris~Barcelona. [Winter]/1902~1903. Brush & pen on paper. 18 x 15,8 [16] cm. Museu Picasso, Barcelona. Donation 1970.

OPP.02:206; DB.DIX:10; MPB:50.490; PP.03:087; Z.XXII:21; LE.88a*:n/a

Tête de femme, de profil. Paris~Barcelona. [Winter]/1902~1903. Conté pencil on paper. 26,5 x 18 cm. Museu Picasso, Barcelona. Donation 1970.

OPP.02:210; MPB:50.492r; PP.0203:061





'La estufa'. Paris~Barcelona. [Winter]/1902~1903. Pen, ink & graphite pencil on paper. 11,7 x 7,6 cm. Museu Picasso, Barcelona. Donation 1970.

OPP.02:211; C:934; MPB:110.906; PP.0203:091; JR.91:266p; PA.19h:120

Torse de femme à la cigarette. Paris~Barcelona. 1902~1903. Conté crayon on paper. 24,8 x 16 cm. Museu Picasso, Barcelona. Donation 1970.

OPP.02:213; MPB:50.493r; PP.0203:063





Couple endormie. Paris. [Winter]/1902~1903.
Pen & ink on paper. 22,5 x 32 cm. Sotheby's.
#334, N08790, 11/03/11.

OPP.02:223; PP.02:154; Z.XXII:4

La main gauche de l'artiste. Paris.
[Winter]/1902. India ink & wash on paper.
10 x 14 cm. Private collection, Europe.

OPP.02:225; GM.11*:10; RD.09*:7





Paysanne. Paris~Barcelona. [Winter]/1902. Pen & ink on paper.
16 x 11 cm. Museu Picasso, Barcelona. Donation 1970.

OPP.02:227; C:922; MPB:110.450; PP.02:225

Études de figures. Paris~Barcelona.
[Winter]/1902~1903. Pen & ink on paper.
17 x 22,5 cm. Museu Picasso, Barcelona.
Donation 1970.

OPP.02:232; C:964; MPB:110.495;
PP.0203:087





Fragment de figure à la tunique.

Paris~Barcelona. [Winter]/1902~1903
[1904~1905]. Pen & ink on paper. 23 x 27,8 cm.
Museu Picasso, Barcelona. Donation 1970.

OPP.02:236; MPB:110.515r; PP.0405:030

Femme criant et autres esquisses. Paris~Barcelona.
[Winter]/1902. Pen & ink on paper. 20 x 9,7 cm. Museu Picasso,
Barcelona. Donation 1970.

OPP.02:238; C:949; MPB:110.471; PP.02:159





Deux études de mendiante. Paris~Barcelona.
[Winter]/1902. Pen & ink on paper. 19,5 x 17,3 cm.
Museu Picasso, Barcelona. Donation 1970.

OPP.02:240; C:956; MPB:110.497; PP.02:165;
BF.21:89p

Amazone avec casque et bouclier. Paris~Barcelona.
[Winter]/1902~1903. Pen, ink & lead pencil on paper. 33,8
x 23,2 cm. Museu Picasso, Barcelona. Donation 1970.

OPP.02:252; C:227; MPB:110.542; P.III:79; PP.0203:090





Amazone avec casque et bouclier. Paris~Barcelona.
[Winter]/1902~1903. Lead pencil on paper. 33,8 x 23,1 cm. Museu
Picasso, Barcelona. Donation 1970.

OPP.02:253; C:916; MPB:110.538; PP.0203:089

Études de nus. Paris~Barcelona.
[Winter]/1902~1903. Pen & ink on paper.
16,8 x 22,7 cm. Museu Picasso, Barcelona.
Donation 1970.

OPP.02:254; C:966; MPB:110.509;
PP.0203:088





Femme couchée aux mains croisées.

Paris~Barcelona. [Winter]/1902~1903. Pencil & red pencil on paper. [9 x 14] 14,7 x 24 cm. Hélène Bailly Gallery. 2019.

OPP.02:264; PP.0203:015; Z.VI:455; MF.01:83p; WR.12b:102

Études: femme aux bas rayés, chat noir, caricatures. Paris. [Winter]/1902. India ink on paper. 20 x 31,5 cm. The Picasso Estate. (Inv 224).

OPP.02:269; CP.95:95p





L'étreinte (Études). Paris. [Winter]/1902~1903.
Pen & ink on paper. 20 x 31 cm. Marina Picasso
Collection. (Inv 00295). Courtesy Galerie Jan
Krugier, Geneva.

OPP.02:270; PP.0203:075; JG.84*:174;
MP.81*:18

Portrait d'Ángel Fernández de Soto: buste.

Paris~Barcelona. [Winter]/1902~1903. Ink on paper. 20,7 x 13
cm. Sotheby's. #45, PF1516, 12/10/15. Courtesy Galerie Brame
& Lorenceau, Paris.

OPP.02:278; PP.0203:056; Z.VI:557; Z.XXII:41;
PA.69a*:115; PC.00:14; TO.95a*:170





Femme assise. Paris~Barcelona. [Winter]/1902~1903. Watercolor & pen & brown ink on paper. 15,9 x 11 cm. Private collection. Formerly Christie's. #1042, 3737, 05/15/15.

OPP.02:285; PP.0203:081; Z.XXII:15; BF.21:77p; MT.89*:53; NY.97c*:96

La soupe. Paris. [Winter/1902~1903]. High-tech scan of oil on canvas [Underlayer of *La soupe*]. 38,4 x 46 cm. Art Gallery of Ontario, Toronto. (Inv 83/316). Gift of Margaret Dunlap Crang, 1983.

OPP.02:309; BF.21*:184p





Cheval et femme à la cruche. Paris.
[Winter]/1902. Graphite on paper. 48 x 63 cm.
Private collection.

OPP.02:320; PP.02:213; Z.XXI:353

Nu debout. Paris. [Winter]/1902. Graphite on paper. 37 x 27
cm. Private collection.

OPP.02:327; PP.0203:041; Z.XXI:381





Femme couchée. Paris~Barcelona.
[Winter]/1902. Pencil. S/U. Private collection.
Formerly Junyent Collection, Barcelona.

OPP.02:338; PP.02:156; Z.VI:406

Couple. Paris~Barcelona. [Winter]/1902. Conté crayon. 32,8 x
20 cm. Private collection.

OPP.02:339; PP.02:158; Z.VI:407





Femme allongée. Paris~Barcelona. [Winter]/1902~1903. India ink & gouache [OIC]. 10,5 x 17,5 cm. Private collection. Formerly Bernard Poissonnier.

OPP.02:340; PP.0203:009; Z.VI:414

Femme et enfant. Paris~Barcelona. [Winter]/1902 [1903]. Pen & ink on paper. 26 x 20,2 cm. Private collection.

OPP.02:341; PP.0203:001; Z.VI:415





Maternité. Barcelona. [Winter]/1902 [1903]. Pen & ink on paper. [23 x 12] 23,3 x 12 cm. Sotheby's. #13, L22009, 10/13/22. Formerly Marina Picasso Collection.

OPP.02:342; PP.0203:010; Z.VI:419

Étude. Paris~Barcelona. [Winter]/1902 [1903]. Pen & ink on paper. 26 x 19,7 cm. Private collection.

OPP.02:343; PP.0203:011; Z.VI:421





Têtes. Paris~Barcelona. [Winter]/1902. Pen & ink on paper. S/U. Private collection. Formerly Curt Valentin Gallery.

OPP.02:344; PP.02:167; Z.VI:422

Buste de femme de profil. Paris~Barcelona. [Winter]/1902 [1903]. Conté crayon. 16,7 x 12 cm. Private collection.

OPP.02:345; PP.02:170; Z.VI:426





Tête. Paris~Barcelona. [Winter]/1902. Pen & ink on paper.
S/U. Private collection.

OPP.02:346; PP.02:171; Z.VI:427



Tête d'homme barbu. Paris~Barcelona. [Winter]/1902.
Pen & ink on paper. S/U. Mr. John F. Keane Collection.

OPP.02:347; PP.02:173; Z.VI:430



Couple. Paris~Barcelona. [Winter]/1902 [1903].
Pen & ink on paper. 19,4 x 17,4 cm. Private
collection.

OPP.02:348; PP.0203:038; Z.VI:596

Tête de femme de profil. Paris~Barcelona.
[Winter]/1902. Crayon. S/U. Private collection. Formerly
Sebastià Junyent Collection.

OPP.02:349; PP.02:196; Z.VI:434





Mère et enfants. Paris~Barcelona. [Winter]/1902. Graphite on paper. 29,6 x 21,3 cm. Private collection.

OPP.02:350; PP.02:157; Z.VI:439

Maternité. Paris~Barcelona. [Winter]/1902 [1903]. Charcoal on paper. [25 x 15,5] 25,5 x 15,9 cm. Sotheby's. #118, L20005, 02/19/20.

OPP.02:351; PP.02:152; Z.VI:441





Femme debout. Paris~Barcelona. [Winter]/1902. Pen & ink on paper. 11 x 15,5 cm. Private collection. Formerly Thannhauser Collection.

OPP.02:352; PP.02:180; Z.VI:442

Femme debout. Paris~Barcelona. [Winter]/1902. Pen & ink on paper. [24 x 17,5] 26,8 x 20,5 cm. Sotheby's. #289, L21004, 03/19-26/21. Formerly Marina Picasso Collection.

OPP.02:353; PP.02:181; Z.VI:445





Étude. Paris~Barcelona. [Winter]/1902. Pen & ink on paper. 32,5 x 25 cm. Private collection.

OPP.02:354; PP.02:182; Z.VI:446

Mère et enfant. Paris~Barcelona. [Winter]/1902. Pen & ink on paper. 22 x 16 cm. Private collection.

OPP.02:355; PP.02:183; Z.VI:447



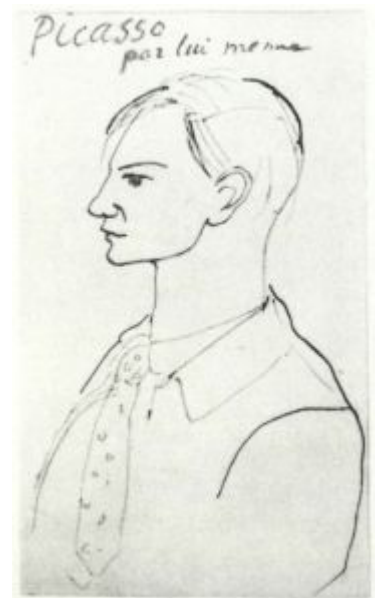


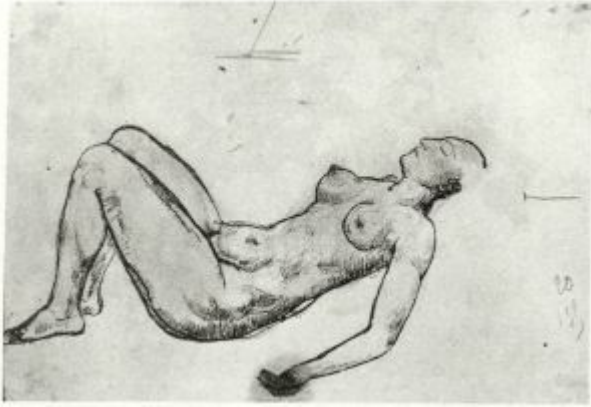
Femme assise. Paris~Barcelona. [Winter]/1902. Graphite on paper.
20 x 21,5 cm. Private collection.

OPP.02:359; PP.02:185; Z.VI:452

Autoportrait. Paris~Barcelona. [Winter]/1902 [1903]. Pen & ink on paper. S/U. Private collection.

OPP.02:360; PP.0203:037; Z.VI:556; PB.21:68





Femme allongée. Paris~Barcelona.
[Winter]/1902 [1903]. Ink & color pencil [Oic].
23,4 x 16,8 cm. Private collection.

OPP.02:361; PP.0203:014; Z.VI:454

Couple. Paris~Barcelona. [Winter]/1902
[1903]. Pen & ink on paper. 16,4 x 16,4 cm.
Private collection.

OPP.02:363; PP.0203:034; Z.VI:523





Femme assise. Paris~Barcelona. [Winter]/1902. Color essence. 33,4 x 23,7 cm. Private collection.

OPP.02:364; PP.02:187; Z.VI:461



Tête d'homme barbu. Paris~Barcelona. [Winter]/1902 [1903]. Pen & ink on paper. 26 x 20 cm. Private collection.

OPP.02:365; PP.0203:018; Z.VI:465



Mère et enfant. Paris~Barcelona. [Winter]/1902~1903. Pen & ink on paper. 21,5 x 16 cm. Sotheby's. #296, L21004, 03/19-26/21. Formerly Marina Picasso Collection.

OPP.02:366; PP.03:196; Z.VI:468; PA.22d*:39

Femme et enfants. Paris~Barcelona. [Winter]/1902 [1903]. Pen & ink on paper. 17,2 x 12 cm. Private collection.

OPP.02:367; PP.03:198; Z.VI:470





Études. Paris~Barcelona. [Winter]/1902 [1903].
Pen & ink on paper. 23,2 x 14,4 cm. Private
collection.

OPP.02:368; PP.0203:020; Z.VI:471

Mère et enfant. Paris~Barcelona. [Winter]/1902
[1903]. Conté crayon. 14,5 x 11,5 cm. Private
collection.

OPP.02:369; PP.0203:023; Z.VI:474





Étude. Paris~Barcelona. [Winter]/1902 [1903]. Graphite on paper. 12,4 x 12 cm. Private collection.

OPP.02:370; PP.0203:027; Z.VI:501

Femme. Paris~Barcelona. [Winter]/1902 [1903]. Graphite on paper. 12,4 x 11 cm. Private collection.

OPP.02:371; PP.0203:028; Z.VI:502





Étude. Paris~Barcelona. [Winter]/1902 [1903]. Pen & ink on paper. 26 x 20 cm. Private collection.

OPP.02:372; PP.0203:029; Z.VI:503



Figure. Barcelona. [Winter]/1902 [1903]. Pen & ink on paper. 21,7 x 21 cm. Private collection.

OPP.02:373; PP.0203:030; Z.VI:508



La soupe. Paris. [Winter/1902~1903]. Infrared reflectance image of oil on canvas *La soupe*. 38,4 x 46 cm. Art Gallery of Ontario, Toronto. (Inv 83/316). Gift of Margaret Dunlap Crang, 1983.

OPP.02:385; BF.21:280p

Environnement vaginal. Paris. [Winter]/1902~1903. Ink & colored crayon on card. 13,3 x 9 cm. Artcurial. #239, 4202, 06/09/22.

OPP.02:388; PP.0203:067; DW.05:13p; JC.01a:16p; JR.91:280p; JR.96:287p; NM.95:68p; NS.01:293





Grand fotografia de Napoleon ou Première communion.
Paris. [Winter]/1902~1903. Ink & colored crayons on card. 13,3 x 9 cm. Artcurial. #240, 4202, 06/09/22.

OPP.02:389

La femme étranglée. [Paris].
[Winter]/1902~1903 [Summer~Fall/1904].
Pen & brown ink on squared paper. 16 x 21 cm. Musée Picasso, Paris.

OPP.02:183; MPP:462; PP.04:096;
Z.XXII:52; BL.91*:73; JC.01a*:42;
PA.07a*:93p; PD.09:49p; RP.06*:90;
UW.84:47a





Groupe de cinq personnages. Paris.
[Winter]/1902 [~1903]. [Conté crayon] Charcoal
on paper. 14,1 x 22,5 cm. Musée Picasso, Paris.

OPP.02:189; MPP:463; PP.0203:021; Z.VI:472;
BL.91*:69



L'offrande. [Barcelona] Paris.
[Winter/1902~1903]. India ink on paper.
25 x 26 cm. Private collection, Germany.

OPP.02:073; DB.DVII:1; LD:34B; P.I:818;
PP.02:219; Z.XXI:357; BP.62:124;
BS.55:20; MD.02*:44p; RD.00*:26;
RD.08*:41p; RD.96*:55



Le marchand de gui. Paris. [End-December]/1902. Gouache & watercolor on paper. 55 x 38 cm. Thomas Ammann Fine Art, Zürich. Formerly Sotheby's. #58A, 05/14/85.

OPP.02:005; DB.VIII:4; LD:50; P.I:834; PP.0203:003; Z.I:123; AC.46:163; BS.19*:101p; BS.55:21; CR.84:29p; MJ.55*:8; MM.97*:87; TH.75:11; UP.00:107; WS.11:30p; WS.94:18p; WS.95a*:19

Le marchand de gui (Étude). Paris. [End-December]/1902. Ink, watercolor [& tempera] on paper [OïC]. 37,5 x 27 cm. Private collection. Formerly Heinz Berggruen Collection.

OPP.02:099; DB.VIII:5; LD:49; P.I:835; PP.0203:004; Z.XXII:22; AP.89:34p; JR.91:265p





Tête de femme. Paris [Gósol]. 1902 [Summer/1906]. India Ink & wash on paper [Reverse of *Nu de dos*]. 16,5 x 10,5 cm. Georges Charensol Collection, Paris.

OPP.02:164; DB.DXV:21; LD:298; P.I:806; PP.06:301; Z.XXII:356

Autoportrait à la canne. [Barcelona]. [1902]. Gelatin-silver print collage & black ink. 7 x 4,3 cm. Musée Picasso, Paris. (Inv APPH 2778).

OPP.02:262; AB.97b*:19; WR.96:204p





Femme assise. [Barcelona]. [1902]. X-radiograph of oil on canvas [Underlayer of *Le repas de l'aveugle*]. 95,3 x 94,6 cm. The Metropolitan Museum of Art, NYC. (Inv 50.188). Gift of Mr. and Mrs. Ira Haupt, 1950.

OPP.02:266; GT.10:22.2; WR.12b:136

Portrait d'homme. Paris. [1902]. Charcoal on paper. 37,1 x 27,3 cm. The Frances Lehman Loeb Art Center. Vassar College. (Inv 1967.31.10.a). Bequest of Mrs. Arthur Schwab (Edna Bryner, class of 1907).

OPP.02:284





Danseuses et profil. Paris. 1902. Color pencils on paper. 12 x 15,5 cm. The Abelló Collection. Formerly Christie's. #349, 06/30/87.

OPP.02:303

El príncipe. Barcelona. 1902. Pen & Ink. S/U. Sebastià Junyer-Vidal Collection, Barcelona.

OPP.02:305; PP.02:024; Z.I:144





Femme assise de dos. Paris~Barcelona. 1902. Pen & ink on laid paper. 16,1 x 11,4 cm. Museu Picasso, Barcelona. Donation 1970.

OPP.02:375; C:254; MPB:110.461; P.I:711; PP.02:003;
BF.21*:T164p; JG.84*:146



Femme de dos, au chignon. Barcelona [Paris]. 1902. Pen & ink on laid paper [Obverse of *Croquis de figure féminine*]. 16 x 11,1 cm. Museu Picasso, Barcelona. Donation 1970.

OPP.02:377; C:253; MPB:110.452; P.I:717; PP.0102:016;
PB.81*:8A.6



Mère et enfant de dos. Paris~Barcelona. 1902. Pen & ink on laid paper. 16 x 11 cm. Museu Picasso, Barcelona. Donation 1970.

OPP.02:378; C:255; MPB:110.453; P.I:710; PP.0102:007; MA.22b*:12; PB.81*:4A.5; VC.10*:n/a

Annotations. Paris~Barcelona. 1902. Ink on paper. 20,1 x 9,7 cm. Museu Picasso, Barcelona. Donation 1970.

OPP.02:379; MPB:110.471r





Femme accroupie. [Barcelona]. [1902]. AI-reconstruction of oil on canvas [Underlayer of *Le repas de l'aveugle*]. 95,3 x 94,6 cm. The Metropolitan Museum of Art, NYC. (Inv 50.188). Gift of Mr. and Mrs. Ira Haupt, 1950.

OPP.02:383

Étude de tête. Barcelona [Paris]. 1902~1903. Pen & ink on paper [Reverse of *Personnage, tête et guitare*]. 31,5 x 22,1 cm. Museu Picasso, Barcelona. Donation 1970.

OPP.02:130; MPB:110.525r; PP.0203:093



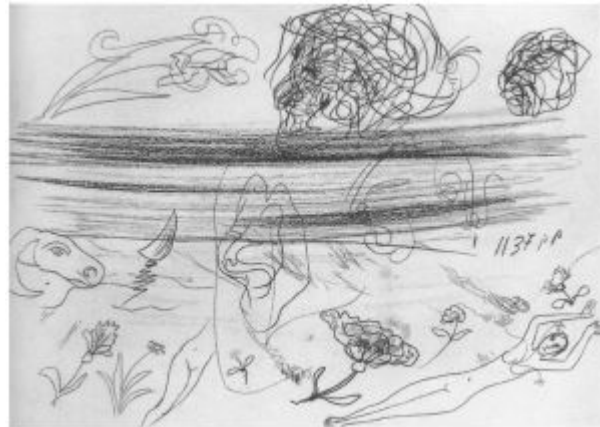


Homme debout. Paris. 1902~1903. Ink on paper. S/U. Catherine Hutin-Blay Collection, Paris. Formerly Jacqueline Roque Picasso Collection.

OPP.02:302

Étude. Paris. 1902~1903. Graphite & color crayons on paper. S/U. Private collection.

OPP.02:263; MF.01:81p





Buste d'homme. Paris. [1902~] 1903. X-radiograph of oil on canvas [Underlayer of *Le verre bleu*]. 66,1 x 28,5 cm. Museu Picasso, Barcelona. Donation 1970.

OPP.02:282; JG.13:42p

Études de femme. Paris. 1902~1903. Pen & ink on paper [Obverse of *Études de femme à la toilette*]. 11,4 x 15,8 cm. Sotheby's. #50, N09727, 05/18/17. Formerly Marina Picasso Collection.

OPP.02:299; PP.0203:025; Z.VI:490; FB.13*:n/a; NY.89a*:36





Études de femme à la toilette. Paris. 1902~1903. Pen & ink on paper [Reverse of *Études de femme*]. 11,4 x 15,8 cm. Sotheby's. #50, N09727, 05/18/17. Formerly Marina Picasso Collection.

OPP.02:300; PP.0203:026; Z.VI:491;
FB.13*:n/a; NY.89a*:36

Nu de profil. Paris. 1902~1903. Pen & ink on paper. 25,4 x 17,7 cm. Sotheby's. #159, L19004, 02/27/19.

OPP.02:312



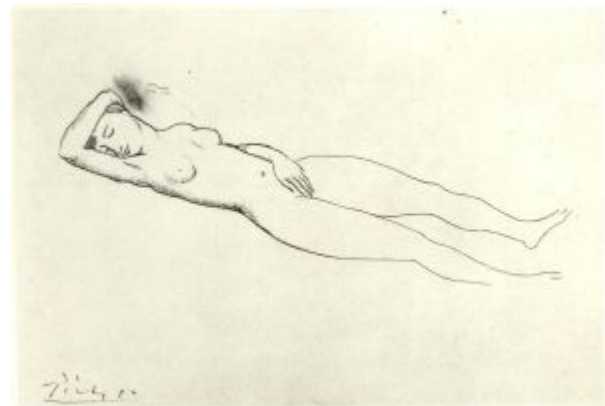


Cinq nus (Esquisse). Paris. 1902~1903. India ink on paper. 34 x 22 cm. Private collection.

OPP.02:328; PP.0203:042; Z.XXI:382

Nu couché. Paris. 1902~1903. Crayon. 26,5 x 37 cm. Private collection. Formerly Christie's. #121, 05/15/86; Sotheby's. #7, 06/28/72.

OPP.02:329; PP.0203:043; Z.XXI:383





Homme debout. Paris. 1902~1903. India ink on paper. 34 x 23 cm.
Private collection.

OPP.02:332; PP.0203:076; Z.XXI:390

Le poêle. Paris. 1902~1903. Graphite on paper. 17,5 x 11 cm. Private collection.

OPP.02:336; PP.0203:078; Z.XXI:398





Le poêle. Paris. 1902~1903. India ink on paper. 27 x 20,5 cm. Private collection.

OPP.02:337; PP.0203:079; Z.XXI:399

Père et fils au bord de la mer. Barcelona. 1902~1903. Ink & color pencil on the reverse of a business card. 13,3 x 9 cm. Subarna, Barcelona.

OPP.02:384





Foule. Paris. [End-Summer~Fall/1901]
1902~1903. Pencil & pen & ink on paper. [18,3 x
21,7] 17,4 x 21,5 cm. Sotheby's. #45, L23005,
04/19/23.

OPP.02:395; P.I:686; PP.01:305; Z.VI:571;
JG.84*:133; UP.00:76

Esquisse d'un homme. Paris. 1902~1903. Pen & ink on
paper [Reverse of *Nu debout*]. [17,2] 16,5 x 10 cm.
Private collection, Furtwangen. Formerly Sotheby's.
#151, 11/30/94; Christie's. #171, 12/06/83; Private
collection, Switzerland.

OPP.02:400; PP.0203:054





Nu de dos assis. Paris. [1902~1903]. Oil on canvas. 24 x 19 cm. Private collection.

OPP.02:382